



ILLUSTRATIONS



MAYOR F. F. FRITZ,
TOWNER, N. D.



GEO. FREEMAN
Drainage Commissioner.



E. J. BATES,
Deputy Register of Deeds.



W. V. B. READ,
DEERING, N. D.



J. B. RIEDER,
County Commissioner,
Third District.



A. J. KIEFER,
County Auditor.



H. H. BERGH,
Register of Deeds.



E. D. ELSTAD,
Deputy Auditor.



C. P. OLSEN,
RUSSELL, N. D.



W. F. SOMMERDORF,
TOWNER, N. D.



S. O. SAMPSON,
County Commissioner,
Fourth District.



F. B. HAINES,
Deputy Superintendent of Schools.



K. KLOCKOW,
Deputy Clerk of District Court.



F. R. BICKELL,
Deputy Treasurer.



FRED ROBLE,
Editor, Deering Enterprise,
DEERING, N. D.



D. McDONALD,
County Superintendent of Schools.



JAS. MCCOMBS,
County Commissioner, Fifth District.



W. S. FREEMAN,
UPHAM, N. D.

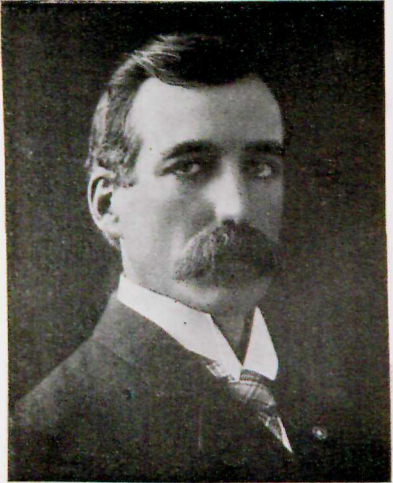


HORACE BAGLEY,
Judge of the County Court.



A. E. WALLEY,
Drainage Commissioner.

ILLUSTRATIONS



JUDGE A. G. BURR,
RUGBY, N. D.



W. R. PITTS,
TOWNER, N. D.



GEORGE KIME,
Justice of the Peace.



M. G. MYHRE,
County Commissioner,
Second District.



G. J. BONINE,
BALFOUR, N. D.



ELMER W. FROHMADER,
GRANVILLE, N. D.



J. L. KILLION,
Editor and Publisher,
News and Stockman,
TOWNER, N. D.



NELS O. ALMQUIST,
UPHAM, N. D.



CHAS. D. DONNELLY,
States Attorney.



D. J. O'CONNELL,
TOWNER, N. D.



H. C. WEBB,
DEERING, N. D.



W. H. PRATT,
ECKMAN, N. D.



ADOR A. JEVNAGER,
Drainage Commissioner.



A. J. FISHER,
BALFOUR, N. D.



A. G. ANDERSON,
VELVA, N. D.



D. A. KRAMAR,
Sheriff.



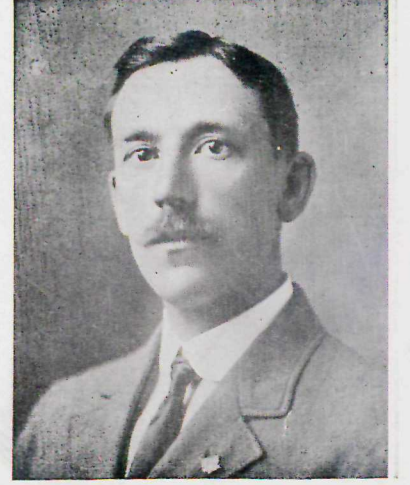
J. O. DESILETS,
DEERING, N. D.



S. M. KOTO,
County Treasurer.



G. T. KNUDSVIG,
UPHAM, N. D.



BUTLER LAMB,
TOWNER, N. D.



ILLUSTRATIONS



L. L. JEWELL,
BALFOUR, N. D.



MARTIN DUNN,
UPHAM, N. D.



THEO. ANFINSEN,
STAR, N. D.



E. D. CARPENTER,
TOWNER, N. D.



E. E. ELLIS,
Clerk of District Court.



BOAZ JORGENSON,
GRANVILLE, N. D.



N. B. KJOS,
BALFOUR, N. D.



M. M. HALLDORSON,
UPHAM, N. D.



JAMES POWERS,
GRANVILLE, N. D.



J. N. PETERS,
VOLTAIRE, N. D.



MR. AND MRS. U. L. TORR,
BANTRY, N. D.



ENOCH MOWER AND FAMILY,
TOWNER, N. D.



ARCHIE BILLINGS,
DRAKE, N. D.



MR. AND MRS. H. C. KENDALL,
UPHAM, N. D.



MRS. AND MRS. S. B. PRATT,
BALFOUR, N. D.



C. W. WHIPPLE,
UPHAM, N. D.



W. C. KYLE,
BANTRY, N. D.



MR. AND MRS. C. E. COREY AND MISS
ALICE COREY,
RUSSELL, N. D.

ILLUSTRATIONS



IVAR IVARSON,
UPHAM, N. D.



V. A. MURPHY,
Secretary Farmers Elevator Co.,
BANTRY, N. D.



C. J. MOLSTAD,
UPHAM, N. D.



EMERY E. CORNELIUS.



FRANK J. ROBLE,
DEERING, N. D.



CHAS. ABRAHAMSON,
TOWNER, N. D.



CARL J. KNUTSON,
VOLTAIRE, N. D.



CHRISTIAN W. JOHNSON,
DOGDEN, N. D.



HENRY KAYLOR,
VELVA, N. D.



GEORGE T. INKSTER.



ALBERT ROALKVAM,
DEEPS, N. D.



STUDIO OF O. J. GRAVEM,
Photographer,
TOWNER, N. D.



GUY LIVINGSTON AND FAMILY,
DEERING, N. D.



INTERIOR VIEW OF VELVA DRUG CO.
Drugs, Books, Stationery, Perfume, Jewelry,
Etc. National Cigar Stand.
VELVA, N. D.



JONAS GOODMAN,
BANTRY, N. D.



JOHN COX AND FAMILY,
GRANVILLE, N. D.



J. W. SAMPSEL AND FAMILY,
BANTRY, N. D.



PETRINE L. AAMOTH.



ED. MARKS AND FAMILY,
GARDENA, N. D.