

Diamond Jubilee

STATE LIBRARY COMMISSION

NORTH DAKOTA
STATE LIBRARY
BISMARCK, ND 58505

July 1 - 2



1882 - 1957

SLC

STATE LIBRARY COMMISSION
BISMARCK, NORTH DAKOTA
Portland, North Dakota

**NORTH DAKOTA
BOOK OR AUTHOR**

F
644
.P67x
C. 1

Portland, North Dakota;
diamond jubilee.

**NORTH DAKOTA STATE LIBRARY
BISMARCK 58501**



AUG 14 1974



3 3105 00040 4432

NORTH DAKOTA
BOOK OR AUTHOR

Tribute to the Pioneers of Portland

by HAROLD K. JENSEN



Portland Today

The citizens of Portland, North Dakota, are to be congratulated for their efforts in the celebration of the town's 75th birthday. That in itself shows that the spirit of the new generations follows the trend of the pioneers.

At no time must we forget to honor these early settlers, who laid the foundation for all that is good, which we are privileged to enjoy today. They were most certainly guided by God in their work of making a paradise of a wilderness.

I was fortunate to have been born in Portland. I lived there from December 29, 1892 to August 29, 1913. I, like many, many other teenagers, went forth into the world to make a niche for myself and for my family. I have always felt that I received in Portland as a child and teenager fundamental principles, that aided me in making a better life.

Portland has always been a clean town. By example and precepts of its residents, we learn the ways of good morality; we learn reverence for God and the Bible, we learn to respect the rights of others and that honesty is the only policy.

From an early age, the boys and girls helped with the chores, both inside and outside the home. To be thrifty naturally followed, and often we heard the words "waste not, want not." Whenever anyone in the community needed help, the neighbors and townspeople considered it a privilege to lend a helping hand. Portland, you gave us the pleasure and joy of loving our home, our school, our church and our nation.

And so, Portland, North Dakota, in Traill County, U. S. A., we, thy sons and daughters, salute you for a job well done.

PREFACE

Once upon a time the eastern part of North Dakota was covered by an immense mass of ice slowly moving southward. This great "plow" shaved off the sharp peaks and rounded up the hills carrying with it much of the rich soil of the far north. The

heat of the sun melted the glacier, and Lake Agassiz drained to the north, gradually shrinking in size, dropping the rich soil and leaving behind the large rocks and stones which had ridden down on the ice. The land of the Red River Valley is possibly the most level in the world. It is the most fertile because of the fine sediments of ground limestone and other rocks, and this is rendered still more fertile by the black organic matter dropped by the water.

The Red River of the North became the highway and guide for the Canadian trappers and traders and the Mecca for the settlers arriving from the Eastern States. In 1870, Walter J. S. Traill, general agent for the Hudson's Bay Co. established trading posts at Frog Point and Goose River on the west bank, and Georgetown on the east side of the Red. Goose River eventually became known as Caledonia, at the mouth of the Goose River.

In 1871 a stage line was extended from Fort Abercrombie on the south to Pembina on the north carrying daily mails from all points east.



Portland About 1905

CHAPTER I

On July 4, 1871, Alvin Arnold, his wife, son Edgar and three daughters "arrived", and unloaded their wagon on the bank of the Goose River. The family (two daughters at the time) had left Indiana in 1868, traveling by covered wagon to Yankton, Dakota Territory. There they remained three years, but learned of the rich lands to be had further north. Shortly after starting out, they joined up with a caravan of thirteen other wagons. Some of the party stopped and settled in Minnesota, but most of them continued on to the Goose River Valley. Claims were staked by this party from close to the present site of Hillsboro to the Arnold place, then furthest up the river.

The first act in the new land was to build a bark "shanty" and clear and plant a garden. The Arnold's had a stove, so were better off than many of the others. Before winter, they built a log cabin for themselves and a stable for the two oxen, two cows, a calf, three chickens, and of course, the dog.

Later in the summer a deserter from the Civil War, Erick Thoen (Gamle Erick) arrived with only a few hand tools in his knapsack and settled a few miles to the

west. Even for those times, Erick lived a rough and primitive life, grinding his coffee by rolling a bottle over the beans, making his own sour bread, and living "off the land". He made wooden spoons and dishes to earn a little money.

In the Spring of 1872 three young Vikings, Fingal Enger, John Amb and Iver Fecher, came on foot from Fargo, following the old "Fort Abercrombie Trail." Each carried an ax and a few biscuits. Mr. Enger's claim in the bend of the Little Fork of the North Branch of the Goose River was the beginning of large farming operations, in both Traill and Steele Counties. Enger Township bears his name. Mr. Amb's farm was also the beginning of extensive agricultural work, being increased by his sons and grandsons. John Amb was Traill County's first elected surveyor, practicing a trade he learned in Norway. He did much of the work on the new town soon to appear.

In the Fall of 1872, Erick Evenson settled to the east and Sven Heskin to the west.

Nels and Anne Heskin and eleven of their twelve children born in Valdres, Norway came to America between 1861 and 1868, Sven Heskin was one of the younger; he was followed by Anders in 1873.

After building a log house, Anders returned to Arena, Wisconsin to report favorably about the land along the Goose River.

May 25, 1874, Nels and Anne Heskin, Ole, Anne, Henrick and family, Nils Skogstad and family (sixteen in all) set out for the land seven hundred miles away. Traveling in sand, water and mud for seven weeks (Nils Heskin, 63 years old, walked the entire distance) they finally arrived in Moorhead, Minnesota, where they remained three days because of an Indian scare. Walking onward, they arrived at the home of Jeremias and Gunhild Arneson on July 10, 1874. Arneson, a son-in-law of Nils and Anne, had arrived three weeks earlier, from Minnesota. On July 11 they arrived at the cabin built by Anders on the present Heskin-Solberg farm. The other members settled along the river, and much of this land is still in the family. The other Heskins soon followed.

Hundreds of the descendants of Nils and Anne Heskin are still living in the Red River Valley. A Family History of this group was written in 1939, and a sequel is now being prepared for another "reunion". One descendant, Oscar Heskin, educator and economist is employed by the United States government and can be found listed in "Who's Who."

Other arrivals of 1874 were Peder Hagen and Jacob Jensen Braaten and their families.

All these early pioneer families worked hard to clean and till the land and establish homes. During the early years they had to go to Caledonia, Georgetown or Fargo with their produce to trade for supplies. The Hudson's Bay Company Posts at Frog Point, Caledonia, and Georgetown carried large stocks of groceries, household supplies and farm machinery, and were generous in extending credit.

Willard Edgar Arnold, or as he was known, Ed, wrote much of the hardships of trips to the trading posts. Very often in the early years young Edgar would start out for Fargo alone. One trip he tells of; he skirted a swamp, started across, and the wagon sank in. He was forced to unload the ten sacks of wheat, carry them to dry land and hitch his oxen to the rear of the wagon by a chain and steer it out by handling the pole himself.

In 1874, the first mill in what is now Traill County, was built at Caledonia (known as Goose River) by the Hudson's Bay Company. The first United States Post Office was established at Frog Point, March 6, 1872, with Walter J. S. Traill as Post Master. In 1871 daily stage coach service had been established between Fort Abercrombie and Pembina. Anyone from the Goose River Settlements who happened to go to the trading post would pick up the mail for the neighbors.

Having been born and reared in the United States, the Arnolds were able to read and write the English language. Many of the settlers found it necessary to

visit the Arnolds to have mail orders and other letters written. There are those still living who remember hearing their parents tell of these trips. Soon the letters were left there to be sent on, and the Arnold home became a community center. All mail received was just addressed: "Goose River Valley, Dakota Territory."

In 1876, Alvin Arnold filed a request for a Post Office to be known as Mayville, in honor of his little daughter. The Arnolds were farmers and not too interested in going into the mail handling business professionally. Andrew Hanson was named Post Master, and located his office about three miles south and east of the Arnold farm. On the same date, June 20, 1877, post offices were established at Newburgh, Stony Point, and Mayville.

Trail County was organized February 15, 1875, and consisted of all of what is now Traill, Steele, and Griggs Counties. In 1882, Griggs County, six townships wide was organized, with Hope as the County Seat. At the meeting of the Commissioners on April 5, 1875, Alvin Arnold was named a Justice of the Peace, and one of the School Districts was named "Arnolds."



"St. Paul, Minneapolis & Manitoba Ry."

CHAPTER II

The St. Paul, Minneapolis and Manitoba Railway, under the guiding genius of James J. Hill, had reached the Red River Valley, and built "down river" on the Minnesota side from Breckenridge, reaching Grand Forks in 1880 and "up river" on the Dakota side to Hillsboro, joining with Fargo-Moorhead in 1881. Jim Hill crossed the Red from Breckenridge to Wahpeton and started a third line in the Valley early in 1880, reaching Durbin that fall. The Northern Pacific crossed the Red River into Fargo in 1872 and forged westward, "looking neither to right nor to left" as required by their contract with the United States. But this invasion of territory by a young rival line was too much and a branch line was built north from Casselton. The Manitoba crossed the N. P. at Sidney and the race for territory was on.

The N. P. (or as it was called "The Casselton Branch Railroad Company) had to cross the Goose before reaching a satisfactory townsite and by early 1881 that place was known and a town platted. The Manitoba surveyors swung to east and west, but finally decided the best place to cross was just below the fork. Portland was platted just south of the fork in November, 1881. Svenne O. Nordskog, who had

located just south of the Arnolds, furnished sixty-nine acres and Mr. Arnold supplied sixty acres for the Original Townsite. O. T. Jahr, just east of the Arnold claim supplied twenty acres for an addition. In 1882, four additions were platted, Riverside Addition in the northwest from A. Arnold, Hillside Addition in the western part from Nordskog, Jahr and Woodruff Additions in the southeast.

The first plat or map of Portland was made by George W. Parke, Division Engineer for the St. P. M & M Ry., who lends his name to the eighty foot wide main street on the section line east and west. George Turner surveyed part of the original townsite and a few blocks in Riverside. John Amb, first elected county surveyor, did the work on the balance of the additions.

All the surveying was completed by February 6, 1882 and the certified plats placed on file in the county seat. An interesting note here is that the railway did not receive warranty deeds for their right of way until February 6, 1882 — a month after the trains began to run.



Railway Station Completed In 1955

HISTORIES OF PORTLAND



The Original "Morgan House"

Prior to 1900, the local newspapers of their day, published two "Histories of Portland". On July 6, 1883, G. B. Thompson, editor of the INTEROCEAN printed:

"The townsite proprietors are W. C. Morrison of St. Paul, A. J. Harwood and O. W. Bennett of Fargo, Alvin Arnold, Ole T. Jahr, and S. Nordskog of Portland. The town was platted December 1, 1881, and opened January 1, 1882. The Inter-ocean newspaper was started on January 27 following, by Mr. and Mrs. J. B. Edwards, editors. One week later a hardware store, postoffice and attorney occupied the same building, although it was only 18 x 32. Stuart and Tolman started the hardware store, Levisce & Levisce and G. A. White, attorneys.

"The City of Portland was incorporated in the spring of 1883 with W. H. Robinson as mayor; James R. Martin, recorder; E. E. Neste, T. G. Anderson and Dr. G. B. Thompson, city council; Ames Thomas, marshal; and Dr. J. D. McKenie, justice."

"The general store was run by J. E. Neste and Bro., E. Seland, Henry Thompson, F. Golden, B. Golden; Levisce & Levisce and G. A. White, attorneys; G. B. Thompson, I. A. Thompson, J. D. McKenzie and L. Johnson, physicians; Beidler & Robinson and W. S. Birch, lumber dealers; Bank of Portland, W. S. Birch, president; Anton Miller, furniture. The hotels are; International, T. G. Anderson; Continental, Sam Lee; Grand Pacific, J. D. Smith. Deacon Smith and Jud Smith, liveryes; Ole Jahr, machinery; J. D. McKenzie and H. A. Langlie, drugs; Frank Krayenbuhl, T. G. Anderson and George Sewell, feed stores; Hanson and Anderson, groceries; Steen & Son, restaurant; Krayenbuhl & Farwell, hardware, wholesale and retail; R. N. Stuart, barber; C. A. Wells, jewelry; Misses Hildebrand, millinery; G. W. Sewell, meat market; Cargill & McMillan, Millers' Association, elevators; Henry Thompson, wholesale liquors; James Bannon, express agent, station agent and operator. There are four saloons here."

"The first settler was Ed Hickey. The first child born was the daughter of Columbus Larson; first store, J. E. Neste and Bro.; first religious service by Rev. Mr. Hammond of Union Theological Seminary, New York City, in May, 1882; first death, W. S. Fox, April 26, 1882; first school house begun June 1, 1882, and the teacher was Hildebrand; first regular railway train, January 1, 1882; the first fire took place in May, 1883, destroying the store of Neste & Bro. and Larson and Owen's saloon."



North Side of Main Street Years Ago

On September 11, 1913, THE PORTLAND REPUBLICAN reprinted a history taken from Volume I, No. 1 of that paper, originally printed August 17, 1893:

"The plat of the original townsite of Portland was filed in the office of the register of deeds of Traill County on the 22nd day of November, 1881 by W. C. Morrison, Ole T. Jahr, Alvin Arnold and S. O. Nordskog, proprietors, and soon after the track of the St. Paul, Minneapolis and Manitoba, (now the Great Northern) R. R. was laid into the town, being in December of that year."

"The first building in the town was moved from old Mayville about a mile east of here, to a site on Broadway, where it remains and forms a part of the dwelling of J. E. Fladeland (1957 comment - that is one block straight west of the school). It was then occupied by Messrs. Stuart & Tolman as a hardware store. This was in the winter of 1881-82. Several others were erected during the same winter and early the following spring. Among the first being the office of Mr. Morrison, one of the townsite boomers, on the corner of Parke & Arnold Avenue where many a real estate deal, highly satisfactory to Mr. Morrison was consummated. Levissee & Levissee, attorneys, had offices with Mr. Morrison, transacted his legal business and assisted in removing the financial epidemics from investors, or in the language of an eminent, but departed jurist, "helped to skin 'em."

"Across the track was the rival real estate office of Nordskog & Jahr, in charge of one T. A. Williams who worked on commission."

"The first hotel was erected by Tom Kelley and Ira Miller, on Arnold Avenue, and known as the International Hotel. It was subsequently purchased by Morgan and Hanson and moved to the east side where it now forms part of the Morgan House. J. D. Smith built the Sherman House. It was then located at the corner of Jahr and 7th Streets, and known as the Grand Pacific Hotel (1957-this would be a block north of the Polka Dot), where the "Deacon" conducted it with a livery stable in connection. Sam Lee was the builder, owner and manager of the Lee Hotel on Bennett Avenue (1957-this would be just south of the bank). It has since burned down; and Sam has settled in Nelson County, where he is gaining honor and wealth, and is known as the Hon. S. M. Lee, member of the legislature from Nelson."

"Stewart and Tolman soon put up a building on Arnold Avenue opposite the present Congregational Church, and removed their hardware stock into it, where they soon failed (1957-this would be across from the school and a little south). The building now forms a part of the general store of E. E. Neste & Co. At the same time, F. L. Krayenbuhl built and stocked with hardware the building now used by M. J. Aikins for the same business."

"Jay B. Edwards published the first newspaper, the Portland Interocean. Jay B. was notorious for the veracity (?) of his boom articles, and for the preponderance of liquid over solid refreshments required to maintain existence."

"In general merchandise, J. E. and E. E. Neste, under the name of Neste Bros. were the pioneers. Their store was at the corner of Arnold and Seventh. It burned and they purchased the Stuart and Tolman building which they moved to Parke Avenue, which after several changes is now conducted under the name of E. E. Neste and Company."

"Ray & Painter had a general store on the site of the Congregational Church. They soon failed, the building forms a part of the Hans Mahlen Store."

"O. E. Soland put in a stock of goods in the Torgerson & Thorson Store, with O. H. Klev in charge." (1957-Bank corner).

"Quaile & McHardy had a small stock in what is now Ryder's livery barn (1957 -The Roxy). They soon sold out to Isaac Golden, who is best known in connection with that location. Isaac's capital consisted of \$400, and a father-in-law of whom he borrowed the same. He soon eliminated the latter by paying him off. Within three months he had things in shape to make an assignment, which he did and claimed his exemption of \$1500, but the stock invoiced only \$1300, and the heartless creditors were appealed to in vain to make up the full amount allowed by our liberal laws." (1957-Isaac Golden owned Golden Lake Store for some time.)

"Probably the largest general store was that of Henry Thompson, at the corner of Parke and Jahr Street, where he did a good business for several years, but finally

burned out, and returned to the place whence he came, Cannon Falls, Minnesota." (Parke and Jahr is the Corner where the Polka Dot is located, but the store was across the street.)



First Large Shipment of Mail Catalogs Received at the Local P. O.

Carriers — Oliver Paulson, W. C. Paulson and Harold Jensen, Raymond Power, Assistant Postmaster in the rear. About 1913.

Dr. J. D. McKenzie was postmaster, with office in the restaurant building of T. G. Anderson, on the site of the present photograph gallery. It subsequently burned." (1957—this would be the Adolf Vinje corner.)

"Anton Miller put in a furniture store on Helen Street. He shortly closed it out and the building was sold to B. K. Kringlie and moved to the east side and used as an agricultural implement house, and was burned later."

"J. Power was early on hand with a harness shop, and has been doing business at the old stand ever since." (1957—just north of Vinje's harness shop.)

"C. P. Mallory had a lumber yard with office on what is now the Grimsrud Building." (1957—Cooper Plumbing.)

"Beidler & Ekel ran the opposition yard. They were succeeded by Beidler & Robinson, who afterward incorporated as the Beidler and Robinson Lumber Co."

"W. S. Birch opened and for four years conducted the Bank of Portland. He afterward sold out to Steele & Froehl who soon failed."

"E. Biel in those days manufactured brick, before he engaged in landscape gardening."

"Space forbids the mentioning of more names, though many others are equally worthy of mention. It may be said however that there were only thirteen saloons in a population of four hundred. But the bartenders were not strikers for the eight hour a day system. They were willing to work early and late, so there was no reason why anyone should go thirsty."

"The city was incorporated by special act of the territorial legislature in 1883 under its present charter."

COUNTY SEAT FIGHTS

Trail County was created from a part of Grand Forks County by act of the Territorial Legislature. Caledonia was designated as County Seat at that time.

The first county seat removal election was held in 1878. Caledonia received 287 votes and Mayville 238.

In 1881 Griggs County was created from the six western tiers of townships and when organized in 1882, Hope was picked as county seat.

In 1883, the question of moving the county seat was again brought before the voters at a special election April 19. Portland and Mayville joined forces and had the townsite of Trail Centre platted half way between them.

A brisk campaign was carried on, and many people became overly enthusiastic. The total votes cast far exceeded the number of legal voters. Trail Centre received 2,011, Hillsboro 795 and Caledonia 450. The court fight which followed brought out many strange stories. Train crews had voted—some even more than once. Traveling salesmen voted, people who owned land in Trail County, but lived in another county cast their vote. One testimony showed that a sixteen year old boy had voted. His twin brother's name also appeared on the poll book, but this young man, Sherman J. Smith by name, was in Larimore that day!

Legal proceedings were started in Fargo on April 9, 1884. The court ruled no legal election had been held, but for all intents and purposes Trail Centre was the County Seat of Trail County for a little over a year.

Trail Centre was platted April 11, 1883, and vacated May 24, 1887. One third of the townsite was on the south side of the highway and two thirds on the north side, being in what are now Viking, Roseville and Lindaas Townships. It consisted of 20 blocks. Its streets were named Arneson, Court, Syverud, Trail, Portland, Birch, Chantland and Mayville. The owners of the townsite were I. W. Chantland and Jeremias Arneson.

While this was going on, Griggs County was having the same trouble. People of Hope stole the records and the Cooperstown supporters stole them back. Finally the two factions met and promoted the creation of Steele County, taking two tiers of townships from Griggs and two from Trail.

Finally in 1890, another county seat election was held in Trail County with Hillsboro the winner. Caledonia attempted to prevent the removal of the records, but late one afternoon, Sheriff Sven Heskin and his deputy, W. K. Seaver, loaded the records and started for Hillsboro. The large treasurer's safe slid off the vehicle, and was left beside the road over night, and when opened in Hillsboro the next day, it was found to contain many thousands of dollars.

EARLY TRAILS

A few traders in the early nineteenth century like Duncan Graham and Robert Dickson were familiar with the area included in the Red River Valley, but there were no established trails in the area until about 1822 when some of the Selkirk Colonists became discontented and moved out south to the Fort Snelling area. They followed a poorly defined trail along the west edge of the Red River Valley on

the gravel beaches of glacial Lake Agassiz, here river crossing was a minimum obstacle, no steep or high banks to interfere and most of way the route was on gravelly, well drained plains.

This route was to become known as the West Plains route to distinguish it from the slightly shorter trail across Minnesota. Among early travelers on the west trail were Peter Quinn, a former employee of the Hudson's Bay Co. In late winter of 1836-7 Martin McLeod and Pierre Bottineau used this trail traveling from Pembina to Fort Snelling.

About 1843 J. Rolette established himself at Pembina and engaged in the fur trade. His headquarters were at Mendota, near Ft. Snelling so it was necessary to develop an overland route for his Red River carts which had been designed in this area. Rolette tried out a few carts in hauling to and from St. Paul, but not until he joined forces with another fur buyer, Norman Kittson was there any degree of success. The project developed to such a degree that hundreds of carts would organize at Pembina, and start out in a southwesterly direction, one driver looking after several carts.

With nearly 500 miles of travel to the St. Paul terminal, it was necessary for the drivers to avoid any unnecessary hardship for their animals, who had to subsist on grass along the way and make an average of fifteen to twenty miles each day.

Camps were made at some stream crossing where there would be grass and water for the stock, shade in hot weather and fuel for the camp fires, and wood to repair the carts. This trail passed Fordville and went about three miles west of Larimore, passing Kempton and Northwood. It passed about three miles east of Golden Lake, then southeast to the Middle and South Fork of the Goose River, southwest of Portland about six miles.

Another early trail went from Devils Lake to Georgetown in about 1859, and coincided with the West Plains route while in what is now western Trail County. It is believed that the Springs on what was once known as the Krogh farm in section 24-146-54 was the stopping place, having good water, grass and other essentials.

From the spring, the fur trail continued along almost south, passing a mile west of Clifford, a little east of Galesburg and Erie. The actual location is not known exactly, as sources of information are rather vague.

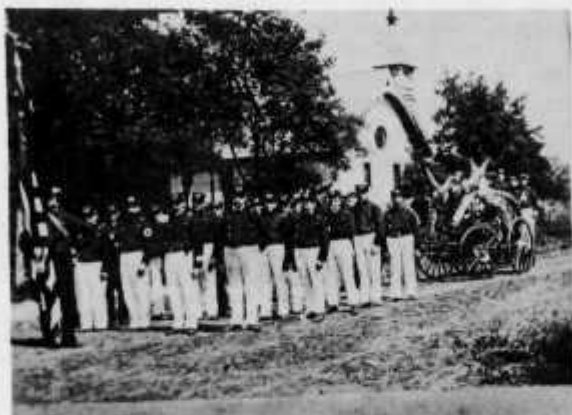
Robert Stanley who came to this area in 1875 and lived at Caledonia until his death in 1942, traveled the trail from St. Paul to Pembina eighty-seven years ago. He was employed by the federal government and transported lumber for government forts, making his first trip in the summer, and in October 1870.

THE VOLUNTEER FIRE DEPARTMENT

Much of the history of the local fire department must be gleaned from issues of the local papers. The "Interocean" listed the first fire as that which destroyed E. E. Neste and Bros. store and Larson and Owen's Saloon. These buildings were evidently across from the present school. The early fire fighting equipment was the bucket brigade. Some time before 1895 the company was organized and a hand pumper purchased. This pump, still the property of the department, was operated by two parallel bars or handles extending down either side of the wagon. When one bar was pulled down by four men, the other bar went up, and had to be pulled down again by four other men, and so it went. This machine did service up until about twenty years ago, last being used for the blaze at the old railroad water tank north of town, which could not be reached by any other equipment. By strong arm methods the old pump was pushed up the east grade and slid down the west grade to the dam and water. The department received its bell in March 1896.

Big things were done in 1905. A Waterous Steam Engine was purchased for

\$1300. The fire had to be kept laid at all times, and started on the way to the fire. The brick fire hall, with a 1000 barrel cistern was put up the same year. Other cisterns were located around town, totalling six at one time. Some were found in the middle of the streets under manholes, and others were in the corners of blocks. These cisterns were filled from a water main which extended from the well at the top of the hill to the section line on the east. This line also served the horse troughs located along the main street and in the livery barns.



Steam Fire Engine and Crew in Parade

On Tuesday, September 3, 1895, fire again made its appearance in Portland. To quote the Portland Republican: "This time the blaze was found in G. G. Koerner's Meat Market, and of course owing to the proximity of the building occupied by the Post Office and Jas. Power's Harness Store, they soon were blazing with it. Though the blaze was small when first discovered, it soon reached large proportions owing to the inflammable material it had within reach, and the fact that the pump would not work at the start. (Even then equipment failed!) Mr. Koerner's loss is \$1,500 with \$300 insurance. The next building in line owned by R. K. Kringlie and occupied by C. A. Wells' Jewelry Store, and the Post Office soon followed. Most of the contents were saved. Mr. Wells saved almost everything. In the Post Office Department all the mail and valuables were saved but the fixtures were burned, entailing a loss of \$300 on Postmaster Warley. The loss to R. K. Kringlie on the building is \$1,000, with some insurance. The residence of G. G. Kerner and the side of the Sherman House next to the fire suffered considerably from the heat."

The foregoing article also tells much of the location of several businesses of that time. These buildings were replaced and occupied by the same businesses and were just across the street from the garage building.

The next fire which rated news was that of the A. E. Ellertson store, the corner now occupied by the cement block building owned by Orville Gunderson. The other buildings in the block were saved, but an interesting note is the story which tells how the fire exposed a large sign, on what is now the Red and White Store, which said in very big letters "SALOON".

In June 1910, blazes again took their toll. Three stores on the corner now occupied by the Bank, Drug Store and Furnace Co. went up. They included E. K. Erickson's General Store, A. J. Anderson Furniture and C. P. Boen's Jewelry.

The issue of July 18, 1912 of the Portland Republican announced that the City Council had purchased a 48 horse power gasoline pumper—after the department had agreed to help pay for the same. This engine, made by the Waterous Engine

Works of St. Paul, was capable of throwing between 300 and 400 gallons per minute and giving a very high pressure from two, three or four nozzles. This machine is also still in Portland and has been used stationary in the fire hall up until the installation of the up-to-date puffers and hydrants.

The old fire bell was given a new twist in 1912 with the installation of the automatic trip, with a switch in the telephone office and one on the front of the City Hall. The only "catch" was once it was turned on it couldn't be stopped until the weight reached the ground floor and stopped. Many was the drunk or innocent person who tripped the switch, and found he had "done it".

In August, 1915 the original Farmers Elevator was struck by lightning and burned to the ground, and was promptly rebuilt.

On January 1, 1916, while preparations were underway for a big wedding, Brufat Church blazed up and was totally destroyed. The wedding continued—in Brufat Academy.

Fires of the 1920's were the old Morgan House where the Farmers Union Oil Co. now stands and the Edberg and Stenerson Garage, across from Enge's. During the twenties the hand chemicals were added. These were soda, acid tanks, pulled by hand and once started could not be shut off. Sometime in this period a Model "T" truck was added to the fire equipment, first departure to self propelled equipment. The electric siren was also installed about that time.

In the winter of 1935, the old creamery on the north edge of town burned to the ground in the middle of the night. In 1938, the Dodge truck came into possession of the department and a large tank for water and a front end pump were fitted to it. In 1950, the second truck was added, with a war surplus pump and large tank.

In 1950 the Farmers Elevator lost their second building by fire. This building has now been replaced by an all concrete structure.

The latest large step in modernization of firefighting was the installation in 1951 and 1952 of a modern city water system with high pressure lines and hydrants throughout the city. Other more minor improvements have been made within the department, for the protection of farm property as well as city buildings, the second truck added in 1950, being known as the "country truck".

PORTLAND CREAMERIES

The farmers of the Portland trade area have long realized the importance of the dairy industry to their prosperity. Shortly after the beginning of the twentieth century, a cooperative creamery was built in Portland. In the early days this business operated only during the Spring, Summer and Fall. They advertised that they bought cream three days a week and the other three days made butter and ice cream—on alternate days of course. This plant passed into private hands shortly after 1920 and was destroyed by fire. The new modern plant of the Farmers Union Cooperative Creamery of Portland (with their milk processing branch in Mayville) is a far cry from the little plant which accepted cream nine months out of twelve, and then only on alternate days of the week.

On January 4, 1917, The Portland Republican published figures for this creamery for the year 1916, with the added comment that the farmers in this territory are entering into dairying more and more every year, and also that they know the value of the local creamery and patronize it in preference to sending their cream away. How true that is today is shown by a comparison of the figures for 1916 and for the year

1956:	1916	1956
Pounds of butterfat received	50,768	337,407.8
Pounds of butter made	57,647	381,705
Gallons of ice cream made	2,124	none
Income	\$17,829.64	\$443,450.49
Paid patrons	14,872.39	360,703.11
Operating expenses	2,378.83	86,341.85



Threshing – Note the Band Cutters and Straw Carrier



"Ossian"

"Ossian", pride of the J. E. Fladeland racing stable, twice lowered the State Record at the Minnesota State Fair. Ralph Pauley, the jockey, rode for Mr. Fladeland for eight years. At one time there were eight horses in the Fladeland stable, and over the years, many more. They were imported from Kentucky, Pennsylvania and Iowa. When Ossian was sold he was sent to Australia to race. The Portland race track was just south of the Aurdal Church. There were several other race horses in Portland and in neighboring towns to make up a meet for holidays and special occasions.

There were other tracks in Portland at other times.



Bruflat Academy -- Later Portland High School



Threshing with a "Modern Machine" with a Straw Blower

BRUFLAT CONGREGATION

Bruflat Congregation was organized December 20, 1874 under the leadership of Pastor Bjug Harstad, who had previously organized Gran Congregation. The families that joined were: Mr. and Mrs. Nels N. Heskin, their sons Ole and Anders and their daughter, Anne; Mr. and Mrs. Hendrik Heskin and daughters Anne (Mrs. K. J. Lucken), Ingrid (Mrs. Olaf Brenden), and son Nils N. Heskin; Mr. and Mrs. Nels

Skogstad and daughters Marit (Mrs. Heskin-Solberg), Berthe (Mrs. A. Hanson), Tonetta (Mrs. Peter Paulson) and son Samuel. Rev. Harstad was chosen pastor of the congregation. The following descendants of charter members are now members of Bruflat Church: N. O. Heskin, Orlo Heskin, Mrs. J. K. Sundby, Helmer Brenden, Bernt and Joseph Lucken, Henry A. Heskin and the Heskin-Solbergs.



Bruflat Church

Bruflat congregation has built three churches. Services were held in the homes until the fall of 1879 when a 32 x 18 frame structure was built near the present Orlo Heskin farm. July 10, 1882, Portland having been platted in the fall of 1881, a decision was made to sell the first church and build in town. A structure 60 x 36 with 14 x 14 tower and a 95 foot spire was built at a cost of \$3,502.33. In 1906 it was renovated. After its destruction by fire, New Years Day, 1916, the congregation voted to rebuild on the same lots. They accepted Aurdal's kind offer to use their church temporarily.

The new brick building, in Gothic architecture, 75 x 40 x 44, costing \$25,000 was dedicated August 5, 1917. The interior finishing is in oak. Stain glass windows are gifts of various members. The Young Peoples' Society, with the help of Carnegie Corporation, had a Kilgen pipe organ installed.

In later years improvements have been made. A n oil furnace has been installed, asphalt tile laid in the basement, new carpet in the auditorium. The kitchen has been remodeled and modernized.

The pastors who have served this congregation until the present are: Pastors Bjug Harstad, J. Halvorson, H. Allen, J. Tingelstad, I. D. Ylvisaker, A. E. Lien, Oscar Rem. I. M. Rotto and F. L. Young. Rev. A. E. Lien was the first pastor with a family to live in Portland. A parsonage was built in 1903. It has since been remodeled.

Bruflat Ladies Aid was organized August 21, 1884, Pastor Harstad presiding. Meetings were held every other Thursday with devotions and handiwork. The lunch was simple at first. The first project was to secure a bell for the new church. The meeting places in the early days were in the log cabin homes.

Ladies Aid Circles meet in the homes to have Bible Study. At the present writing Bruflat Ladies Aid has 77 active members and many associate members.

Other active organizations include: Church School, LDR, LCR, Lutheran Brotherhood, Luther League and Children's Choirs.

Two sons and one daughter of Bruflat Congregation entered full time service in God's Kingdom: Carl K. Lien, (deceased) John Rotto and Christine Rotto.



Bruflat Church Which Burned January 1, 1916

AURDAL LUTHERAN CHURCH



Aurdal Church Today - To Be Replaced Soon

The organization of the Aurdal Lutheran Church dates back to the influx of Norwegian settlers in this community in 1873 and 1874. The congregation was organized on November 22, 1874 after a church service by a visiting pastor, Rev. J. A. Bergh, in the home of Mr. and Mrs. Jeremias Arneson. At this meeting the following people were present and became charter members: Jeremias Arneson and wife, Gunhild; Ole O. Berg and wife Anne, and children Marie and Ole; Thor Pederson and wife Marit and daughter, Gunhild; Erick Evenson and wife Kari and children Gertrude and Helena; Sven Heskin and wife, Ragnhild; Andres Skarperud and wife Levi, and children Osmund, Anne and Oline; Knut O. Haugen and wife, Kjersti and children Marie and Ole.

The name Aurdal was chosen as the official name because of the charter members had come from a place in Norway by that name. The head church of this parish in Norway was located in a village by this name and was commonly referred to as the Aurdal Church.

The first officers of the newly formed church were Ole O. Berg, secretary and trustee for one year; Thor Pederson, trustee for two years; and Andres Skarperud, trustee for three years.

Three children were baptized at this service. They were: Gunhild, daughter of Mr. and Mrs. Thor Pederson; Oline, daughter of Mr. and Mrs. Anders Skarperud; and Ole, son of Mr. and Mrs. Ole O. Berg.

In later years two of the original families left the congregation. One of these joined another congregation closer to their home, and another moved to one of the other states. The remaining charter members remained with the Aurdal congregation until their death.

The following pastors have served the Aurdal Church: Rev. Peter A. Nykreim 1875-1876, Rev. Bernard Hagebo 1876-1877, Rev. Martin J. Waage 1877-1882, Rev. Jens Iverson Lonne 1883-1897, Rev. Andreas Houkom 1897-1907, Rev. M. B. Sveen 1907-1925, Rev. C. J. Christianson 1925-1927, Rev. Olaf Bruseth 1927-1940, Rev. Manly Gjerde 1940-1953, Rev. W. Anderson 1953 until the present time.

In 1890 the congregation joined the newly formed United Norwegian Lutheran Church, but in 1897 it voted to withdraw from this body because its convictions were more in harmony with the Lutheran Free Church. For a time after that Aurdal continued as an independent congregation, but now for many years it has given its loyal support to the Lutheran Free Church.

During the first years of existence, the congregation worshipped in various homes and then later in the school house. In 1885 this school house was purchased from the city of Portland for the price of \$900.00. As the congregation grew greater facilities were needed, and therefore plans for a church building were begun in 1892 with the dedication of the Church in 1895. During the past three years Aurdal has again been working on a building program which is expected to materialize in the near future.

Earliest records seem to indicate that the Sunday School was organized in 1878 with varying arrangements through the years as to time and place of meeting. The Ladies Aid dates back to the organization of the congregation and has been active through the years. The Luther League was organized in 1914 and the Gleaners in 1928.

The congregation today has a baptized membership of approximately 500 souls, and a confirmed membership of 311. The present organizations include the Senior, Junior and Children's Choirs, The Gleaners, Ladies Aid, 10 Circles, and the Luther League. The present Sunday School enrollment is 175.



Farm home of Mrs. Sophia Sanderson – the original Aurdal Church and first public school in Portland.

BRUFLAT ACADEMY

In the early years of Bruflat Congregation, the Christian instruction of the children was considered of very great importance.

Until 1877 instruction was left to the parents and the pastor. Then J. L. Mehus was employed to teach one month. The term was later increased to nine months.

Under the leadership of Pastor Bjug Harstad, a boarding school committee was chosen in December 1887 to make plans for a school building. A three story building with basement, costing \$7,500, as erected to serve as Academy for the confirmed and as a boarding school for Christian instruction of children. It soon proved too small, so in 1896 a boys' dormitory was built. This institution, across the street from Bruflat Church, served many young people from a large area until it was closed in 1918.

In 1920 the buildings were sold, to Portland Special School District at the price of \$2,500, for high school purposes. In 1939 the main building was razed, after a new high school had been erected near the grade building. The dormitory was remodeled and serves as town hall for Viking Township.

John G. Halland, from Luther College served as the first principal of the Academy department.

The school was financed by tuition fees, by an annual subsidy of \$500, from the Lutheran Synod and donations from Ladies Aids and individuals. In 1914, the income from a \$15,500 endowment fund was made possible.

The "Portland Normal School and Business College" as it was called at first, had over 100 students the first year.

The following subjects were required of Normal students: Reading, Spelling, Grammar, Arithmetic, Penmanship, Geography, Bookkeeping, Physics, Geometry,

German or Latin, Debating, History, Physiology, Algebra, Civics, Physical Geography and Bible Study.

To graduate from a commercial course the following subjects were required: Bookkeeping, Commercial Law, Commercial Arithmetic, Reading, Grammar, Composition, Orthography, Civics, Actual Business and Debating.

Taken from a catalogue: "Any person of good character, who is willing to obey the regulations of the school may become a member by paying his fee and securing a certificate of admission from the principal. Good conduct and strict attention to duty is required of every student. Any student keeping bad company, improper hours, visiting saloons, balls or dances or otherwise disbehaving, forfeits all his rights as a student and will be dismissed immediately."

"Rooms are 65c per week. Board is \$1.75 per week, and tuition \$8.00 per term of ten weeks".

From a later catalogue one learns that many changes took place. The following courses were offered: Four Year College Preparatory Course, Three Year Normal Course, Two or Three Year Commercial Course, Courses in Vocal Music, Piano and Organ.

By 1916 tuition was increased to \$6.00 per month, board \$3.50 per week, and room 70c to 80c per week.

J. Gloppen came in 1889 to teach nine month's parochial school in the Academy building, at a salary of \$250 a year plus board and room. He taught elementary subjects in the English language and Christian education in Norwegian. Later he had an assistant.

By the second year the school was so crowded that the church was used for extra space. The beds in the dormitory department were so close that one could walk on them through the room.

The morning breakfast usually consisted of syrup and bread. A better meal was served at noon. What more could one expect at \$2.40 per week for board and room?

The janitor received \$20 per month and the matron \$3.00 per week.

Brufat Academy flourished. It is remembered as an outstanding institution in the days when the Academy served in place of the more recent high school.

TRINITY CONGREGATION



Trinity Church at Roseville in 1913

In the Spring of 1878 came Bjorn Kleveland, Albert and Michael Anderson, and the Lars Rockne family. In 1879 Mr. Kleveland returned to Iowa for his bride. Their first year on the Dakota prairie, they lived with Nels Larson and O. B. Lura, two bachelors who had built a shanty on their land. A little later the N. O. Sando, O. C. Koppang, Peter Webstad, Engebret Knutson and Gilbert Westland families came.

Rev. Bersvend Anderson of Fishers Landing, or Climax, Minnesota, hearing of this group of Lutheran pioneers came to visit and conduct services in March 1880. The first service was held at the Christian Monson home. At this service Calmer Knudson was baptized. In May 1880, Pastor Anderson again visited the group; services were held at the Nels Larson home. At this time the group decided to organize a congregation and a committee was appointed to draw up a constitution. On May 22 the constitution was adopted and the "Trefoldigheds Mendighed" became a reality. Meeting at the Lars Rockne home the following families became charter members: Christian Monson, Nels O. Sando, Lars Rockne, Michael Olson, Bjorn Kleveland, H. P. Olson, Engebret Knutson, Henrick L. Kleveland, Ole Erickson and Ole C. Koppang.

Others who joined shortly after were: Nels Larson, O. B. Lura, Christian Bory, Gunnar Danielson, Lars Hoiland, Ronaug Koppang, Andrew Koppang, Mathias Kjelsberg, Knut Stokke, Iver Moster, Aslad Nelson, Martin Aaserud, John Grinde, Torsten Ness, Halgrim Larson and Carl Amb, with their families.

The first officers were: N. O. Sando, President and O. B. Lura, Secretary. Trustees were: Christian Monson, B. L. Kleveland and Lars Rockne. Rev. Anderson accepted the call offered. A Sunday School was organized and became the first intra-church organization.

The congregation met on May 17, 1881 to discuss the possibility of acquiring a site for a church. In the following four years, affiliation with other congregations was considered. Rev. J. L. Nesheim was called and began his ministry in the fall of 1884. In May 1893 the congregation joined the Hauge Eynod.

On November 2, 1885 the land for the present church was purchased. Pastor Nesheim served the congregation until 1886.

In 1890 Trinity became affiliated with Stordahl congregation of Galesburg. Rev. B. Reitan was secured as pastor. In May 1891, ground was broken and the corner laid for the church which was dedicated in 1893.

Rev. Hans Hjertaas succeeded Reitan in 1893, serving till 1904, when he was succeeded by Rev. O. J. Malkevick. In June 1917 a call was issued to Rev. M. B. Sveen, who was serving Aurdal congregation, and he served until 1926.

In 1926 Trinity approached the Bruflat Congregation with a request for parish affiliation. This was granted; a call being issued to Rev. A. E. Lien of Bruflat. Pastor Lien served until his death in 1934. During Rev. Lien's pastorate the congregation celebrated its fiftieth anniversary with several of the charter members present.

In 1940 the members of the church dug their own basement and moved the church onto it. The new corner stone laying and dedication took place in 1942.

Carl Lien, student pastor served for a while after his father's death. Rev. A. N. Brudvig served the congregation temporarily in 1935. Rev. Oscar Rem was called and served the parish until 1939. Pastor I. M. Rotto of Berthold was called on July 13, 1939 and served faithfully until his death on July 18, 1954. Another student pastor, Conrad Greenquist then served until Rev. Frisbie L. Young of Nashua, Montana, commenced his ministry on July 3, 1955.

A Ladies Aid has always been active since it was organized in 1882 with Mrs. Carrie Monson the first president. A Young Girls' Society was organized in the early nineties and is now known as the L. D. R.

In the early days the young folks set up their own organization called "Undomsforening." The Luther League was organized in 1941. The Parish Brotherhood has taken an active part in creating interest in the work of the church among the men of the congregation.

ENGER TOWNSHIP

The old township of Enger Traill County Dakota Territory, was by the action of the Governor of the Territory of Dakota - dissolved - in organizing the county of Steele on the 13th day of June A. D. 1883. On petition from a majority of the legal voters of township 147 Range 54, the county commissioners of Steele County did on the 8th day of June, 1885, organize the said township 147 Range 54 into a civil township to be designated by the name of Enger Township. This name was indeed suitable as Fingal Enger, a Norwegian emigrant, was the first white man to enter and homestead on this land in March, 1872.

The first meeting of Enger Township was called to be held in a schoolhouse on section 8 in said township on the 23rd day of June 1885. At this meeting the following persons were elected to the several offices: Supervisors; R. K. Lien, chairman - Ole Anderson and Ole Haagenson. Clerk, S. H. Hustvedt. Treasurer, F. G. Enger. Assessor, O. O. Fechar. Justices of the Peace, D. W. Sprague and S. H. Hustvedt. Constables P. P. Boe and Gunder Rud Compensation for Supervisors and Town Clerks was then one dollar and fifty cents per day.

A town hall was erected in the year 1891 in the center of the township. The expense of constructing this building was about one hundred dollars, and was paid out of the general township fund. This same town hall is still on the original site and is used for the present day township meetings. This Enger Town-hall was the original home office and principal place of business for the Farmers Mutual Fire and Lightning Insurance Company of Steele County, incorporated on June 10, 1893. This company now has its home office at Finley with an approximate nine and one-half million dollars insurance in force.

Long term office holders of the township include the following men:

T. O. Schjeldahl - 28 years as supervisor.

Peder Boe - 27 years as clerk.

H. O. Haagenson - 35 years as assessor and several terms as clerk and supervisor.

Olaf A. Ringerud - Clerk and supervisor.

Hans Fugleberg - Supervisor.

Christ Thompson - Supervisor.

Settlers who arrived in Enger Township before 1880 are as follows: S. H. Hustvedt, F. F. Enger, Amund Amundson, P. P. Boe, T. O. Gronbeck, Helge Nelson, Ellef Nyhus, Ellef Nelson, Erick Nyhus, Martin Jemtrud, Andrew Ringerud, Mr. Goplerud, Ivar Fechar, T. O. Schjeldahl, Lewis Severson, Ole and Andrew Fechar, and possibly Ole Jonsrud (Erickson) and Willie Brainerd. From 1880 and on, men and their families continued to arrive to establish homesteads or to buy railroad land.

It is interesting to note that these early places soon had greatly increased in the value of property, etc. By 1882, this township had a total of 70 working oxen, with a valuation of \$2285.00

According to the records, credit is due Enger Township for having the first teacher as well as the first school-house in Steele County. Steffa Hustvedt came to Enger Township locality shortly after 1876. During that same summer he taught school in a granary on Fingal Enger's farm. In the summer of 1877, the pioneers of Enger Township erected a log school house on Per Nyhus's land. Amund Amundson burnt and slaked the necessary lime, and Paul Boe did the plastering. This primitive building was used until about 1885. Records dated June, 1885, show that there were four schools in Enger Township. These operated five months - that is - two months during the fall and three during the spring and summer. The fall term began in November and the spring terms in April.

The first records kept show minutes of meetings held in 1885 with the following named persons elected to serve on the school board: Director, Reier Lien. Clerk, D. W. Sprague. Treasurer, F. G. Enger.

Peder Boe, one of the older living members of Enger Township served fifty years on the school board as treasurer. Anton Jemtrud served as clerk for about forty years.

The children of the early settlers also attended several weeks' of religious school during the summer. The first of such parochial schools which are now termed vacation Bible schools, was held in the Fingal Enger home and taught by Ole Bale.

The first cemetery of Enger Township dates back to 1880 and is located on land owned by Lawrence Severson and originally homesteaded by Lewis Severson. The first burials in this cemetery were of small children that had died from diphtheria during an epidemic in the 80's. There are ten children buried and these were children of the Lewis Severson family (4) Johannes Bothun's (2) Sever Treim's (2). Two infants, one of Ellef Nelson's and another of the Edward Severson's (a recent burial) are also buried there.



Portland Baseball Team — 1884

ROSEVILLE AND VIKING TOWNSHIPS

At the first Township meeting, it was Christian Monson who suggested the name of "Roseville" for the new township because of the wild roses growing on the prairies. At that time Roseville consisted of two Congressional Townships, being twelve miles north to south and six miles east to west.

The Township presumably was organized about 1880, but the first recorded proceedings of the Board of Supervisors was on January 2, 1882 when they met at the S. N. Heskin home. The officers at that time were: E. I. Evenson, S. N. Heskin and S. C. Swenson, supervisors. H. E. Lucken Clerk; John Amb, Justice of the Peace and O. T. Kjensrud, constable. The second meeting was January 23, 1882 when the official bonds of the following officers were examined and approved: Assessor, Nels Wold, Justice of Peace, Christian Monson; Constable, Trond Simle, Road

overseer Halgrim Larson. Twelve dollars and fifty cents was advanced for a set of law books, \$2.50 being advanced by each of four members.

The Township meeting were held at various places in Portland during the first years: Grimm and Wilson's Hall, International Hotel, T. G. Anderson's Morgan House. From 1884 they rented Jahr's Hall.

Originally the township had four road districts each with an overseer, but in 1885, eight districts were created each with an overseer, showing the increase in roads.

Names prominent in Roseville Township history and the order they served up to 1889 were: Supevisors: E. I. Evenson, S. C. Swenson, T. G. Anderson, E. N. Heskin, M. J. Akins, Jacob Kern, J. D. Smith, Christian Monson, O. T. Jahr, J. M. Roberts, O. C. Koppang, Thor Pederson, H. H. Skadeland and Nils O. Sando.

A town hall was erected in 1889 on a lot 50 x 100 which they purchased from S. C. Swenson for \$25.00. This was on the west edge of the village of Portland and was built at a cost of \$215. This hall, 16 x 20 feet is still in use as a town hall.

The Portland Branch of the Great Northern Railway runs through the entire length of the township. Four miles south of Portland is Roseville Station. Here Cargill Bros. built a large elevator and a few year later the Duluth Elevator Co. built the PV Elevator. The Trinity Lutheran Church is located here as well as a rural school.

On April 7, 1919, by resolution of the County Commissioners of Traill County, the double township was divided and South Roseville henceforth was known as Roseville and North Roseville became Viking Township.

Joint meetings were held in 1919 for the pupose of dividing up the money and road equipment, and methods worked out for the ownership of the Town Hall now in the southern township. All properties were appraised and evenly divided between the two new political subdivisions.

Roseville kept the townhall and it is still in use. After the erection of the new Portland High School Building, the building which had served as Bruflat Academy Boys' dormitory as well as the P.H.S. gymnasium was purchased by the Viking Board and annexed to the township. By lowering the roof and other improvements it was converted into a modern town hall.



Silver Wedding Celebration at the H. H. Skadeland Farm in 1905.

Portland Junction, the point of meeting of the two branches of the Great Northern Railroad is a platted village, but with the coming of modern transportation and mail delivery lost its importance. "Enger Post Office" was for some time located in this Viking Township village, as well as a country store, but at the present time there is only the Portland Junction Elevator and a potato warehouse. The elevator is now adding a large annex to their building showing a confidence in its continued existence.

LITTLE FORKS CONGREGATION

The Little Forks Congregation was organized December 28, 1877, at a meeting in the Fingal Enger home. Present for the meeting were Pastor Bernhard L. Hagboe, Erick Nyhus, Torgrim Olson Fechar, Johan Olson, Ellef P. Nyhus, Sevatt Swenson, Kolbjorn Olson Levedalen, Amund Amundson, Bernt Johnson, Gunder H. Stavens, Helge Nelson and Fingal Enger.

On December 12, 1881, Anders Anderson donated two acres of land in Enger Township for a cemetery plot. The cemetery was formally dedicated January 21, 1883. It was decided at the annual meeting November 13, 1883, to erect the church building at this site. The building was to be 50 feet by 32 feet and 20 feet high. Daniel Bjerke and Peter Wold were secured as carpenters and building was begun in 1884, but because of hard times and early fall work, it was not completed until the spring of 1885. However, the annual meeting was held in the new church building November 12, 1884.

In 1891 the Ladies Aid donated an organ and bell. Mr. Haukom was the first organist.

It was in the year 1897 that Osten Pladson built the altar and altar rail for the church. The work was turned out on a home-made lathe which was powered by stepping it with the feet. When the church blew down in 1900, only a part of the altar was damaged. Mr. Pladson took it home and repaired it. The altar was first painted by Hans Tanberg of Northwood. It is exactly the same altar that was in the church which blew down. The altar painting depicting the crucifixion was painted by Mrs. Johanna Raugland, at one time a resident of Cummings, Dakota Territory.

Pastor Bernhard L. Hagboe was the first pastor of Little Forks, starting in 1878. He was followed by Pastors M. J. Waage, Bernhard Tollefson, A. J. Eikeland, K. C. Grundahl, Alfred E. Setness and Carl Field.

The new church was erected in 1900 after the storm which wrecked the original structure. Various improvements were made on the church buildings from time to time. In 1914, the chapel was expended at a cost of \$1,079.50. In 1939 the church was redecorated and improvements made on the chapel. In 1952 an automatic oil burning furnace was installed. Between 1950 and 1952 the church was again completely redecorated and the Ladies Aid provided a new carpet.

The Young Peoples' Luther League has put in three kinds of lighting systems in the church. The first was the kerosene chandelier; then came the gas lights and last the present electric lights. Electricity in Little Forks brought about changes as it has through out the world. On April 29, 1951, a Hammond electric organ was dedicated by Dr. David Stoeve, North Dakota District President.

Little Forks has an active Ladies Aid, Sunday School, Luther League, Girls' Society and Choir.



Aurdal Ladies Aid About 1898

Back Row - Mme. Knudt Sundby, Bjornstad, Rev. Jens Lonne, Mmes. A. Aasen, and Ingeborg Flaten. Second Row - Mmes. F. Rugland, Sander Olson, Syver Anderson, Marit Pederson, Gunhild Arneson, Sven Heskin, and Nils Hendrickson. Front Row - Mmes. John Quam, E. Soldahl and Iverson.

PRIMROSE TOWNSHIP

Primrose Township was organized in 1880, and was named for Primrose in Dane County, Wisconsin, former home of early Dakota settlers.

Nils S. Skogstad is credited by some with being the first settler in this township, but he never proved up on land and moved further east. The first settlers to file on land were: G. O. Holkesvig, G. O. Odegaarden, K. S. Knudson, H. C. Rud, Henry Gilbertson and Anton Gilbertson.

The first township officers were J. M. Paterson, Chairman, M. O. Solie and H. C. Rud, Supervisors. H. J. Rindy was Clerk and Henry Gilbertson was Treasurer.

On February 16, 1886, a petition was presented to the commissioners by L. L. Mehus and others for the organization of a school district. On March 2, 1886 it was decided a school election should be held at the home of John Hallingstad. The following officers were elected: Lars Mehus, Director, Henry Gilbertson, Treasurer and William Darch, Clerk.

On March 27, 1886, it was decided to have four months of school. The first terms were held in the homes of Ole Lee, William Headburg, O. C. Seell and Henry Gilbertson.

On March 18, 1887 a special meeting was held to agree upon where school houses should be built, and final selection was made on May 21, 1887.

On June 13, 1887, a meeting was held at the home of Thomas Evenson and bids were received for construction of school houses. The bids were for \$388, \$320 and \$200. Mr. G. Gullickson, having the lowest bid, was awarded the contract.

It was also decided to build storm cellars under the school. One is known to have been built, and was found a couple of years ago when the building was moved. It was made of heavy planking, with an entrance from the school room.

History of Bang Evangelical Lutheran Church PORTLAND, NORTH DAKOTA

The history of Bang Congregation begins with the pioneer movement of Dakota Territory, now known as North Dakota (north half of Dakota Territory).

Mission work was being carried on by Rev. B. Harstad as early as 1878 in the territory extending westward from Gran Congregation located east of Mayville. Services were conducted at the few scattered pioneer homes.

Bang Congregation was organized at services held in Peder Goplerud's log house, on Saturday, April 16, 1881, the day before Easter.

"Bang", the name given the congregation was suggested by Mrs. Peder Goplerud, it being the name of the congregation in Valdres, Norway, of which many of the pioneers had been members.

The first trustees were: John Hallingstad, Syver Frosiid and Ole Vestland. Gunder Rud was the first secretary and Ole C. Rud the first treasurer. Gunder Rud served as song leader (Kloker) for 35 years from the time the congregation was organized.

Previous to the building of the church, services were conducted at the various farm homes, including those of Peder Goplerud, T. O. Schjeldahl, Ole C. Rud, Reier K. Lien, and John Hallingstad.

The site first agreed on as the location for the church and cemetery was east on the river in Section 34, in Eger townships in Steele County. It was known as "Magnusbakke". The following year this site was changed to its present location, for the convenience of members located further north, since members in the south section had in mind the organization of a new congregation, known as Perry Congregation.

A part of the church was built in the year 1885. Steeple and vestry additions were completed in 1893. Dedication services were held on October 29, 1893 by District President Rev. K. Bjorgo, assisted by Rev. J. R. Rorvik, of Hillsboro, N. D.

Bang Congregation, together with neighboring congregations served by pioneer Rev. Bjud Harstad, owe him a debt of gratitude for his untiring efforts in his mission work. Due to the large mission field Rev. Bjud Harstad had charge of, he was unable to handle the required work, and assistance was necessary. Bang Congregation was organized by Rev. Harstad who was assisted for a short time by Rev. Gronlid, and later by Rev. John Halvorsen (1885) who served until 1886; Rev. Hans Allen, 1886 to 1892; Rev. John Tinglestad, 1890 to 1900; Rev. I. D. Ylvisaker, 1893 to 1902.

In 1901 Bang and Perry Congregations withdrew from the call served by Rev. John Tinglestad and Rev. I. D. Ylvisaker comprising Bruflat, Mayville, Washington Prairie, Norman, Gran, Perry and Bang Congregation, and organized the Bang and Perry Call. Rev. J. B. Rorvik, at that time pastor in Hillsboro, was called and served as pastor until 1914, being the first resident pastor.

Rev. C. M. Hallanger served this call for 21 years, and until his death on August 10, 1935. Following Rev. C. M. Hallanger's death, until Rev. Edward C. Nordby entered his duties in 1937, the congregation was served by the neighboring pastors, Rev. V. E. Boe, Rev. A. J. Eskeland, and Rev. Oscar Rem. The greater responsibility

was carried by Rev. Rem. Rev. E. C. Nordby served the call until December, 1954, and from the time of his resignation until the present pastor took over the call, the parish, both Bang and Perry congregations, was served by Student Pastor John Rotto. The present pastor, Rev. Arthur J. Ree, assumed his duties on July 1, 1955, and was duly installed as pastor of the Call on July 31, 1955.

During the course of its history, Bang Congregation celebrated anniversaries on the 40th, 50th, 60th years after its founding. In 1931, the congregation celebrated its 70th anniversary, which was held in conjunction with the dedication ceremonies for the new church building finished that year. On June 13, 1956, the 75th Anniversary was observed, at which the special speakers were Dr. Robert H. Boyd of Luther Theological Seminary and Pastor C. Nordby, former pastor and now of Wolseth, North Dakota.

The members of Bang recall with just pride that their church bears the name of one of the oldest churches in Norway, in which some of their forefathers had worshipped. According to legends recorded in 1733, this church dates its origin to about 1150 A. D. It was found many years later in a heavy forest grown up around it since the country was depopulated by the bubonic plague in the 13th Century. From this church, then, in Valdres, Norway, comes the name of the present Bang Congregation.

The congregation is fortunate in having a very active Ladies Aid Organization, an active Luther League in spite of its smallness, a large Sunday School and Mission Society. There are also a Men's Organization, the Brotherhood, only recently organized; a Senior Choir, a Junior Choir, and a newly-formed Ladies Chorus.

History of Perry Evangelical Lutheran Church

PORTLAND, NORTH DAKOTA

Bang Congregation was organized April 16, 1881, but it soon became evident that this Community was too large and widespread a territory so it was decided to make two congregations.

In early days there were no churches so the services were held in the early pioneer homes and school houses. At one of these services held at the John Hallingstad home on December 30, 1884, Perry Lutheran Congregation was organized. Several of the early pioneers settling in this community had immigrated from Perry Congregation, Primrose Township, Dane County, near Mount Horeb, Wisconsin. So they named both the congregation and the township for these. K. S. Sulland was the first secretary and John Hallingstad was the first song leader, "Klokker", and served for several years in this capacity until the time of his death in April, 1922.

At a meeting held January 6, 1885, the following were elected trustees of the congregation: Halvor Rindy, Thorbjorn Evenson, and John Hallingstad. These were also elected to draw up a constitution for the congregation. The church and grave lots were bought from Sever K. Pladson and Thorbjorn Evenson and deeds to this plot show they each received \$6.00 for same. The Church was built in 1896. Some remodeling was done in 1924 and the basement was built, and the cornerstone was laid by Pastor I. D. Ylvisaker at the 40th Anniversary in November, 1924.

Charter members of this congregation are Peder Evenson, John Hallingstad, Gilbert Knudson, Ole Haneval, C. O. Kvernem, Ole C. Lee, John T. Eide, Halvor J. Rindy, Thorbjorn Evenson, K. S. Sulland, Sever K. Pladson, Ludvik Larson, Knudt S. Knudson, Syver Haakenson and Olaus Gretum.

The following pastors have served this congregation: Pastor H. B. Haarstad, 1884-1890, assisted by Pastor Johannes Halvorson, 1884-1886 and Pastor Hans Allen, 1886-1893. From 1890 to 1901, Pastor Tingelstad, and from 1893 to 1901, Pastor

I. D. Ylvisaker served.

In 1902 Bang and Perry congregations withdrew from the call served by Pastor Tingelstad and Pastor Ylvisaker, at that time comprising Bruflat, Mayville, Washington Prairie, Norman, Gran Perry and Bang congregations. Together they organized the Bang and Perry Call. The parsonage was built that year on Section 5 in Primrose Township. Pastor J. R. Rorvik was the first resident pastor and served from 1902 to 1914. Pastor C. M. Hallanger was then called and served the congregation for 21 years, until his death on August 10, 1935. From this time until 1937 when Pastor E. C. Nordby entered his duties, the Call was served by Pastor Brudvik of Clifford, who ministered to this congregation. Pastor Nordby served the congregation until December, 1954, and until the present pastor took over in July, 1955, the congregation was served by Student Pastor John Rotto. Pastor Arthur J. Ree began his ministerial duties on July 1, 1955, and was duly installed as pastor of the Call on July 31, 1955.

In 1902 a member of Perry Congregation, Gunnar Odegaarden, was ordained into the Ministry. He received a call to Clifton, Texas, where he served for 10 years until his death.

Pastor C. M. Hallanger's son, Frederick, also studied for the Ministry and was ordained in 1928, and has since served in the Madagascar Mission Field of the ELC.

PERRY LADIES AID

The Perry Ladies Aid was organized at a meeting held at the John Hallingstad home December 28, 1894. The following became charter members of this Aid: Mrs. K. S. Knudson, Mrs. G. Odegaarden, Mrs. P. Evenson, Miss Ingaborg Brend, Mrs. H. J. Rindy, Miss Gunhild Odegaarden, Mrs. A. Brend, Miss Petra Hallingstad, Miss Mina Hallingstad, Mrs. Anne Gullickson, Mrs. K. Bergene, Mrs. T. Evenson, Mrs. H. Bjerke, Mrs. E. Simonson, Mrs. M. Bjerke, Mrs. K. S. Sulland, Mrs. J. T. Eide, and Mrs. S. K. Pladson.

The officers elected at this meeting were: President, Petra Hallingstad; Secretary, Gunhild Odegaarden; and Treasurer, Ingaborg Brend.

Of those charter members only two are still living and help in the work of the present Ladies Aid. They are our first president, Mrs. Petra Hallingstad Lucken, and our first secretary, Mrs. Gunhild Odegaarden Kville.

The Luther League and Dorcas Society are organizations that have helped with the work and donated to expenses and missions of the Congregation. For several years there has been an active Sunday School and from time to time there has been a choir. As we have no record of leaders we can only mention a few: Mrs. C. M. Hallanger, Mrs. Clarence Bergene, Mrs. Ernest Taylor, and our present leader, doing such good work, Mrs. Arthur Ree.

OTHER CHURCHES OF PORTLAND

The year 1882 marked the organization of a Methodist Congregation and the building of a church by this group in Portland. After about two years this congregation was dissolved. A Congregational society was organized and this group purchased the Methodist Church and continued the work here for many years until about 1915. The church has since been razed.

Another church group which left a lasting impression upon the Portland community was the Lutheran Brethren (Broder Samfundet). This congregation, made up largely of first generation Norwegians had their house of worship in the southern part of town. With the passing of these pioneers, membership dwindled and this group has been absorbed by other churches and the building moved away.



Harvesting on the Hogfoss Bros. Farm
Andrew, Christian and John Hogfoss shown.

DO YOU REMEMBER?

- The Railway round-house which stood west of the Farmers elevator.
- The brick factory which stood near the Aurdal Church.
- The flour mill which stood west of the Brunsdale elevator.
- The annual Fireman's Mask Ball and grand march.
- When the boys used to put tick-tacks on the window panes of homes at Halloween.
- The Skerry's swimming hole.
- Big Ole Paulson and big John Eide.
- The Ball Park.
- Jacob Larson and his camp in the "Jungles".
- Levi Goplerud and his dog "Ole".
- Pete Monson's bus.
- Jacob Kern's red Maxwell.
- J. M. Wesley had the first radio in Portland.
- Krocheck the fish-peddler.
- Ben Johnson and crew of carpenters.
- John Rye the mason.
- Charlie Crawford practicing his bass horn at the elevator.
- George Attebury singing patriotic songs and directing the City band during the first World War.
- Louis Ervin lifting bridge girders with his feet while unloading them from gondola railway cars.
- Gilbert Jordet writing a check on a shingle for lack of a check blank.
- The "Christiania boys" returning here every spring from the Minnesota lumber camps wearing their steel calked boots.
- Alfred "Knutie" Knutson's cafe The Emporium.
- Burt Monson's 24 bottom plow pulled by a steam engine.
- Bill Paulson playing the Marimba and Myrtle Miller the piano at Portland's first movies at The Family Theatre operated by J. E. Fladeland.
- When you could catch sacks full of big fish with your hands, when they became trapped in the rocks at the railway dam.
- "Big Ben" Theodorsons threshing rig.
- Henry Nelson's hundred gun salute at sunrise every 4th of July, using blasting powder and two anvils.
- Ben Rockey playing patriotic selections on his cornet every 4th of July morning.
- Martin Severson singing Norwegian songs and giving his imitation of the Portland train at public programs.
- Earl Fladeland, first World War flyer, who toured the country from here

to Texas with his Flying Circus, which consisted of stunt flying, wing walking, parachute jumping, and hot-rod polo.

— Tom Arnold and his buckskin horse and the 20 hounds he used for hunting wolves.

— Ed. Arnold pulling his two sleds on his trapping line.

— Hans Jensen's big dray team hauling ice from the river to the ice house without a driver.

— Ole Evju and John Wesley going to Minneapolis and buying a Ford and a Cadillac and attempting to drive them back here. Wesley got as far as Fergus Falls, but Evju made it back here in about three weeks.

— Dr. Hjelle playing first base on the Portland team.

— Jim Power catching for the Portland team without wearing a glove, as was customary in those days.

— The Boston Bloomers, a traveling girls baseball team, playing the Portland team.

RAILROAD MERGER

In 1896 the United States Supreme Court rendered a decision that the Great Northern and Northern Pacific Railways could not consolidate competing and parallel lines. Someone wanted to know if this would be retroactive in regard to the Portland and Mayville Branch lines. As a result the Portland Republican of May 7, 1896 published the following facts.

"Some years ago, the N. P. desired an entrance into St. Paul and Minneapolis from its terminus, then Sauk Rapids, Minnesota. After much maneuvering and unsuccessful attempts at building over the route, a treaty was consummated with the St. Paul M. & M., which gave the N. P. the right to build on the Manitoba's right-of-way between Sauk Rapids and Northown Jct. The entire deal made at that time was as follows: The N. P. gave up to the St. P. M. & M. the Mayville branch, Casselton to Mayville, North Dakota; the Browns Valley Branch to Morris, Minnesota; and the Pelican Rapids Branch from Fergus Falls to Pelican Rapids, Minnesota. The N. P. acquired from the St. P. M. & M.: the Milnor Branch from Wahpeton to Milnor; right-of-way from Sauk Rapids to Northown Jct., Minnesota; and the privilege of using the Manitoba's tracks between St. Paul and Minneapolis for a number of years at a fixed annual rental."

Of course, the St. Paul, Minneapolis and Manitoba Railroad changed its name to the Great Northern Railway by having the latter take over its properties on February 1, 1890.

The Portland and Mayville Branches have remained the property of the Great Northern. Up to the time of the merger in about 1883, the two lines were competing for territory and business. The Mayville Branch operated out of Casselton and the Portland Line started from Breckenridge-Wahpeton. At the time of the construction of the Surrey Cut Off, the original link with Breckenridge was removed by taking up the track, but giving Portland a direct train to Fargo — considered a great asset about the time of the First World War.

ARNOLD PARK

Named in honor of the original settler, Arnold Park is located on the north edge of Portland in a horseshoe bend in the Goose River. Entered from the north, a one

way road takes the visitor around the circumference of the horseshoe bend, past the children's wading pool, the city pump house and the new dam just completed last year.

The Park Board has provided stoves, picnic tables and benches, and the other necessities for visitors seeking rest. For the children there are swings and slides, and bath houses are available for the swimmer.

The park has been left very much in its natural state with many oak and elm trees providing shade. A crew cuts the grass and trims the trees — leaving an adequate supply of wood for the picnickers.

Close at hand is the baseball diamond used by the school and the Junior Legion teams.



Back Row — Orville Patterson, Elmer Knutson, Jordal Johnson, Charles Crawford, and O. R. Groettum. Third Row — Elmer Brundale, Lief Field, Ole O. Trage-ton, Christ Koppang, Norman Brunsdale, and Kalmer Knutson. Second Row — H. A. Toensing, Alfred Koppang, M. O. Grandgard, Bennet Rockney, Alfred Knutson, Ed. Swenson and Ole Wickoren. Front Row — Arthur Swenson, Emil Gilbertson, Oscar Sanderson, Henry S. Heskin and William Kern.

HANS ANDERSON FOSS

An outstanding resident of the Portland area before 1890 was Hans Anderson Foss, poet, author and temperance worker. Hans Foss, uncle of E. R. Foss of the First and Farmers Bank, had several books published in Norwegian. He wrote "Livet i Versterhiemen", "Husmands Gatten", and "Christina Valdersdatter". "Christina" was written in the attic of the old log house on the Jeremias Arneson farm east of Portland, and the inspiration for the story was a young girl just arrived from Valders.

"Christina" or Inger Fjeld soon became Mrs. Hans Foss.

Mr. Foss was active in the temperance fight, and gave much of his time to organizing "Temperance Alliances". Members signed a pledge which read: "I promise and agree not to use, buy or sell or give to others, any intoxicating liquors as a beverage and to the best of my ability, work for the welfare of the Society". The Pleasant Prairie Temperance Society of South Roseville was organized by Mr. Foss June 20, 1885. This society adopted as its motto: "Have courage to say no", and had a banner nine feet long and five feet wide, so lettered.

For some time Mr. Foss was in the publishing business and worked for a Grain Commission firm. His last home was at Minot, N. Dak.

There are several versions of the song "Portland on the Goose", and rumor has it that one of the better versions will be sung by a group of old timers during the celebration!



Young Men of Portland in 1906

Back row — Hedberg, Louis Kern, Hjalmer Hendrickson, Andrew Larson, P. M. Paulson and Emil H. Gilbertson. Second row — C. O. Peterson, Melville Kern and Symor Hendrickson. Third row — J. E. Johnson, Alfred Knutson, H. A. Toensing, and Thorvald Osmon. Front row — E. R. Foss, Ole Wickoren and Edwin Swenson.

PORTLAND TODAY AND TOMORROW

Portland's prosperity lies in the farm lands surrounding. We now have a population of over seven hundred, and have the physical equipment necessary to growth.

On two heavily travelled highways, this town in the heart of the Goose River Valley is receiving an ever increasing share of automobile and truck traffic and the

attendant business. A few years ago the State of North Dakota in collaboration with the city rebuilt Parke Avenue for this highway, and now Portland is connected to the east, west and north with hard surface all year roads.

Since World War II, upwards of \$650,000 have been spent in other construction in the city. The biggest project was the \$257,000 water and sewer system. In 1956 this plant was improved with the assistance of the State Water Commission. The City and State jointly constructed a \$28,000 concrete dam in Arnold Park, guaranteeing an ample supply of water for all purposes.

Besides the new dam, the water and sewer system includes a lift station and sewer disposal lagoon and a 50,000 gallon water tower.

Located in the city park, just up river from the dam, the well and reservoir is 32 feet deep and 60 feet in diameter, with a capacity of 22,00 gallons of water per foot of depth. The sands between the well bottom and the river, act as filters for the water as does the well screen of coarse concrete.

The water distribution system included 13,050 feet of six and eight inch mains along some 30 block length of the city, and installation of 12,915 feet of eight and ten inch clay sewer pipe.

Besides the clay pipe, the sewage system includes 4,000 feet of cast-iron force main from the lift station in the city to the disposal lagoon three fourths of a mile east of town.

The city was about ready to go on its utilities program just before the war, but was stopped by wartime restrictions on materials.

Recent construction are: a \$205,000 Cooperative Creamery and locker plant, a \$158,000 Farmers Elevator and a new Theatre, Cafe and Post Office Building. The Great Northern constructed a station at a cost of \$40,000 two years ago.



Roseville String Band

Ella Rockney Monson, Calmer Knutson, Albert Rockney, Bertha Webstad, John Grinde, Elmer and Amanda Knutson, with Ben Rockney and Alfred Knutson in front.

PORTLAND SCHOOLS

The first school built in 1882 soon proved too small, and a new building was erected in 1885. In 1900 the present grade building was built and the old school building was moved up town, and now serves as the City Hall.

The first teacher was Belle Hildebrand. Other early teachers were: Clara Biel, Milson Brumwell (father of Mrs. Orville Skarperud), Ole O. Trageton, Mrs. A. Louise Fladeland, Mrs. A. Marie Fladeland, Robert Colvin, Mrs. James Power, Mrs. P. M. Paulson, Mrs. B. B. Grinley, and Mr. and Mrs. A. G. Muller.



The two grade buildings shortly after the completion of the new building in 1900.



The Two School Buildings As They Look Today

Some high school work was offered from 1908 and on. However in 1918 a two year high school with Clarissa Brager as principal, and Ida Lucken as Commercial teacher was located in rooms over the "Farmers Store", in which building are now located the Portland Drug and Gunderson Furnace.

In 1919-1920, due to the fact there was no high school in Portland, about twenty five students attended Mayville High School.

In 1919 the Portland Special School District was organized and the Board of Education purchased the Bruflat Academy buildings. The fall of 1920 the first four year high school was opened in Portland, with Alvin Stolen (Supt.), Gunda Nodtvedt and Elloise Lien as teachers. Class plays and basket ball games were held in the Portland Opera House, now the Legion Hall.

In June, 1921, Portland High School graduated its first class. Members of this class were: Frances Sharpe, Adele Lien and Helga Tellevik.

A couple of years later, the Bruflat Dormitory was remodeled and used as a gymnasium.

In 1936 a new high school was built at a cost of \$60,000. This building is complete with gymnasium — auditorium, home economics department, library and six class rooms. Superintendents who have served in addition to Mr. Stolen are: Albert Hjelle, Stanley Johnson, Henry Moe, Robert Lovell, K. L. Zenner and H. S. Stensland.

At the present time there are 12 teachers in the school system and 250 pupils enrolled.



Portland High School's First Basketball Team

Leon Power, Warner McNair, George Simley, Earl Smith and Ray Power. Ole O. Trageton, coach.

The high school is fully accredited by the State Department of Education. It offers in addition to the regular academic subjects, two years of Home Economics, typing and bookkeeping.

Extra-curricular activities include a mixed chorus, boys and girls glee clubs, a 60 piece band and a beginners band. The last three years the Portland band, under the direction of Mr. Philip Megorden, has received a highly superior rating at the District Music Festival at Grand Forks.

A future Homemakers of America Chapter holds regular meetings during the school year.

Football, basketball, baseball and track have regularly scheduled contests with other schools in this area. Portland High School basketball teams have achieved great success under the coaching of Harley Ludwig. In the past seven out of nine years he has taken his "Portland Pirates" to the Regional Tournament. In 1955 the team won the regional and participated in the State Class B tournament at Minot.



Portland H. S. Team of 1955

Standing: James Thompson, Eugene Hanson, Curtis Rotto, Jerry Bergene, Karl Lucken, Dennis Thykeson, and Harley E. Ludwig, coach. Front row: Gene Larson, Dennis Overby, David Rud, Herbert Seaver, Mardell Flaten and Carl Amb.



Portland H. S. Band 1956

EXCERPTS FROM PORTLAND REPUBLICAN

May 7, 1896

I will deliver ice to any place in the city at 40 cents per hundred pounds.
— R. K. Kringlie

Wanted — Everybody to come in and see my 400 samples of wall paper and my stock of paper on hand. — Hans Jensen

January 17, 1894

School began Monday with Simon Jahr in the upper room and Miss Celia Olson in the lower.

January, 1914

Peggy — Yes, I was going abroad, but I — aw — I changed my mind, you know.
Peggy — Well, I do hope you got a better one in the change.

November 5, 1914

Advertisement — Show every night, Family Theatre, two shows — 7:45 and 9:00 — Program changes. Monday, Wednesday and Friday. Four reels, 4,000 feet, 10c and 15c. The serial "The Million Dollar Mystery" was being shown.

June 16, 1898

Ida A. Neste passed away June 13, 1898. She was born January 29, 1882 shortly after the beginning of Portland, and may be said to have been the first child born in Portland. (She was the step-daughter of H. H. McNair and a half sister of Mrs. Carl J. Evanson of Portland and Mrs. Roy Little of Mayville.

March 26, 1914

BRUFLAT ACADEMY LITERARY SOCIETY PROGRAM

Piano Solo	Miss Lillegaard
Reading	Melvin Anderson
Question Box	Herby Rygg
Original Monologue	
"Man and the Mosquito"	Thomas Linn
Piano Solo	Ragnar Onstad
Journal	Frieda Lien
Dialogue	Orville Anderson
Selection	Band

April 15, 1897

The government steamer Ogemaw was struck by a large cake of ice which stove a big hole in the bow and sunk it, while on its way down the Red River from Grand Forks to look after distressed settlers. No lives lost, but the crew and a number of passengers had a narrow escape from being drowned.

July 15, 1897

G. A. White has purchased a brand new Rambler wheel.

A projecting kinetoscope showed in the opera house last Thursday evening.

The big local talk in 1914 was about the proposed connecting link between the Portland line and the Sarles line on the Great Northern. The War killed it.

The Portland Creamery opened for the season April 4, 1914 and indications were for continuous operation.

The City Council advertised for bids for the electric light plant.

A. E. Ellertson & Co. announced they had bought out the H. Foss stock in the Republican for April 15, 1897.



Joseph C. LaBelle (left) publisher of Portland Republican for many years and Edward Fore (right).

A Short Sketch of a Prosperous Farmer

Taken from the Portland Republican, November 12, 1914

"North Dakota has but one R. H. Murphy and we might add too, but one Mrs. R. H. Murphy, for their success is probably as much due to one as the other.

R. H. breaks his own record this year by raising 75,000 bushels of grain at a cost of only 13 cents per bushel, and not the best season, in some respects, to make a record in either, as unfavorable weather in harvest time delayed cutting several days on account of lodged grain, making it necessary to cut but one way—a very expensive method. But threshing is where the record was made. The 75,000 bushels of grain being threshed out at lightning speed, one day's run recording 3,200 bushels and one afternoon 1,900 bushels which shows what kind of a pusher Mr. Murphy is.

Mr. Murphy has some novel business methods; one of which is, he puts own money on interest and borrows money for running expenses during the summer, but the secret of his success is his master hand in arranging details. He is as familiar with the smallest job of work to be done on the farm as he is with the largest, and he makes it a point to look after it personally. Nothing escapes his attention. A man will hear of it as quick if a hitch strap or ball of twine is wasted or destroyed as he would were he to burn the separator or kill a span of mules.

Mr. and Mrs. Murphy came to this country several years ago. They were comparatively poor at the time and rented land which they subsequently bought, paying from \$8.50 to \$20 per acre. They have their land all paid for, money in the bank—no one knows how much—and, as R. H. is a director in the bank, they probably would not tell either. No other country but North Dakota has soil and conditions that allow one man, through energy and shrewdness, to earn \$15,000 in one year at farming—over \$40 per day. No wonder Mr. and Mrs. Murphy spend the winter in the south. We would, too—From the files of this paper 19 years ago."

NOTE: The Murphy home farm was the place now owned by J. G. Kjos and operated by Earl Fisher just south of Portland.

LOCAL NEWS

Local news item, December 1908—The telephone office will be closed from 1 to 6 o'clock Christmas and New Years Days. (Long distance lines were completed in 1897.)

Bruflat Academy closed forever in 1919—the buildings became the property of Portland Special School District the next year and a four year high school was started.

In 1920 Portland Special School District added a tier of sections from Roseville and Viking Townships to the school district.

Viking Township was created in 1919 from the north half of Roseville.



A. J. Anderson's Second Furniture Store
— now Haga's Recreation Parlor



Mrs. S. K. Kringlie's Millinery and Dressmaking Shop



At the Nelson Blacksmith Shop

The Portland light plant went into operation in 1914 supplying direct current to local customers. It was sold to the Red River Power Co. and closed January 19, 1926. Thereafter Portland received alternating current. The Red River Power Co. was absorbed by the Northern States Power Co. which serves Portland today.

The last livery barn as such was torn down in 1926, but another livery barn, which had been converted to other uses was torn down in 1947 by Alfred Domier.

Portland High School played its first game of basketball at Hillsboro on January 18, 1920.

THE AMERICAN LEGION

The Charles M. Root Post of the American Legion was organized in Portland on November 13, 1919 with J. Earl Fladeland as first Commander. Charles M. Root was a member of a show troop which broke up in Portland and left Root behind. He enlisted in the army from here and died in the flu epidemic. This Post was disbanded after a few years.

In 1944 the new Post was named in honor of Clarence O. Anderson, killed in a collision of bombers over England in 1943. The first Commander was Herman A. Haugen, manager of the local creamery at that time.

In 1946 the Post purchased the Opera House and has done extensive remodeling to the quarters.

In 1951 a permanent Firing Squad was chosen and this group is active on patriotic occasions as well as at funerals for veterans. They also sponsor Junior Legion Baseball, and join in the operation of "Boys' State".

The Auxiliary of the Clarence O. Anderson Post was organized in February 1946, with twelve charter members. They work for child welfare and veteran rehabilitation. They sponsor the Sister Kenny Polio drive each year, and join with the other auxiliaries around the state in sponsoring Girls' State.

PORTLAND BOOK AND THIMBLE CLUB

The Portland Book and Thimble Club was organized at the home of Mrs. E. W. Hanson on September 5, 1931. Mrs. Norman Brusdale was the promoter. The following joined the first year: Mmes. E. W. Hanson, A. G. Muller, B. B. Grinley, Harry Solberg, C. A. Hjelle, Wm. Procter, A. E. Lien, W. A. Condie, C. G. Hanson, J. Sparrow, P M Paulson, and the Misses Myrtle Haugom, Guri Amb, Sarah Heskin, Julia Heskin and Martha Solberg. The club became affiliated with the General Federation of Womens Clubs the first year.

Through the years the organization has supported and sponsored many civic and public welfare projects: Rationing Project, Get Out the Vote, Mobile X-Ray Unit, City Flower Shows, Park Dam, Railroad Park, Medical Project, Union Hospital at Mayville, Girl Scouts, Athletic Field, Christmas Cheer, Books for the School Library, Skating Rink, besides donating money and gifts to the Red Cross, Polio Fund, Cancer Fund, Salvation Army, Veterans' Hospital, "Care", Korean Relief, TV's at Jamestown Mental Hospital, American Bible Society, N. Dak. Peace Garden, European Relief, and other local and national projects.

Members have won prizes in essay writing. The club awarded prizes to pupils for projects, and entertained teachers at various occasions.

Each year the organization has sponsored a rummage sale. Among other money raising projects might be mentioned: Hobby Show, Concordia Choir Concert, Linen Display of 140 articles, Hand Work Display, Bazaar, Kaffe Kalas with a Norwegian Display.

The programs have been varied: North Dakota Topics, Foreign Countries, International Relations, Health, Education, Communism, Civil Defense, Weather, Safety, Gardening, Indian Problem, History of Portland, Youth Conservation, Art, Book Reviews, and many other topics.

The Book and Thimble Club has observed its 10th and 25th anniversaries with teas at which members of other clubs of the area were guests.

Mrs. Wallace Haugom is the president of the club for the year 1956-1957.

FARMERS MUTUAL FIRE & LIGHTNING INSURANCE COMPANY OF TRAILL COUNTY

Another first for Portland. Traill County can boast of having the oldest Farmers Mutual Fire and Lightning Insurance Company in the two states of North and South Dakota. With its home office here in Portland, The Traill County company received its charter June 22, 1885. The charter, issued for thirty years, has twice been renewed.

The records of this company have been kept intact for the seventy-two years of operation and are on file in the Home Office of the Company. E. H. Krogh, the present secretary succeeded his father who had held that office for many years.

At the present time, this company has over \$13,000,000 in insurance in force.



A Postcard From Years Ago

POSTMASTERS OF PORTLAND

According to the records of the Post Office Department in Washington, the following have served as Postmasters of Portland, with dates of appointment:

James D. McKenzie	January 19, 1882
Hilmar A. Langlie	December 11, 1883
Henry Thompson	January 10, 1887
Hans Anderson Foss	January 28, 1887
Ole H. Klev	October 13, 1887
T. G. Anderson	November 9, 1889
John B. Steen	May 4, 1891
John T. Warley	May 23, 1893
Thomas Power	March 2, 1898
James Power	January 9, 1900
S. K. Kringlie	May 10, 1916
Carl E. Knutson	February 1, 1923
James Power (Acting)	April 1, 1925
Harry Solberg (Acting)	September 1, 1925
Harry Solberg (Regular)	December 16, 1929
Joseph G. Kringlie (Acting)	December 31, 1933
Joseph G. Kringlie (Regular)	July 7, 1939
Leonard I. Aamold (Acting)	March 31, 1948
Leonard I. Aamold (Regular)	September 30, 1949
	To date



Bert Monson Delivering Mail by "Automobile"



Elevator Years Ago

CREDITS

The "History Committee" wishes to thank all who assisted in making this little book possible. Thank you, Frank Perrin of the Public Relations Dept. of the Great Northern Railway, the staff of the Post Office Dept. Library, Mr. Dana Wright of the North Dakota Historical Society, and Harold Jensen of Mandan.

Special thanks go to Miss May Fladeland for the wonderful cover.

"The Committee" is really made up of those who contributed parts of this booklet. So thank you for the chapters on the churches, townships, the Academy and the schools. Thanks to all the owners of the pictures.

To Misses Clara and Mildred Bergene go the credits for all the work on the biographies, so thank you. Thanks go to the typists, copy and proof readers.

In publishing such a short history there will be errors and omissions, but they are unintentional.

DIAMOND JUBILEE HISTORY COMMITTEE
Philip M. Paulson, Chairman

Martin Larson Aaserud

Martin Aaserud was born January 6, 1850 near Bergen, Norway. He came to Chicago and was married to Maria Holand, May 28, 1882. They came to Traill County in 1886 and farmed in Roseville Township until his death, October 14, 1897. Mrs. Aaserud died October 22, 1937.

There were six children: one infant died in 1889, Amanda, Leonard, Ellen, Mabel and Otto, who passed away in 1956.



John Amb

John Mikkelson Amb, born June 25, 1849 in Hedemarken, Norway, came to Wisconsin in 1869, where he did railroad work. In April 1872, together with Fingal Enger and Iver Fetcher, walked from Fargo to this area.

The three helped each other build log cabins. As they were not married they were free to leave to work on the railroad, steamboat, and for a surveyor company.

In December 1882, John Amb married Ragnild Kulhusbraaten who came from Valdres, Norway in 1881. She was employed at Heskins until marrying Mr. Amb.

Seven children were born to Mr. and Mrs. Amb. They were: Ellen, Emil, Thomas and Christine (all deceased), and Martin, Nicolai and Guri.

Mr. Amb passed away April 3, 1893.

Halgrim Larson

Halgrim Larson was born in Iowa, March 10, 1857. His wife's name was Martha Rockney, born November 18, 1857 in Minnesota. They came to Port-

land in June 1, 1878. He was a farmer. Married in Iowa on January 1, 1877.

Migrated from Minnesota in covered wagon and settled in Traill Co., Roseville Twp. Halgrim Larson died in 1912. Mrs. Larson died Dec. 3, 1902. A family of six children were born; only two surviving are Mrs. C. E. Knudson (Effie) Great Falls and Mrs. Louise A. Anderson of Bay City, Tex.

"Gamle Danske", itinerant blacksmith, came to this territory well before the turn of the century. He traveled from town to town and took advantage of the hospitality of the local blacksmiths. He was well known, in a radius of 50 miles of Portland. His main income was derived from selling punches, chisels, and nippers that he made; as well as knives made from worn out files. "SKAL DU KOBE KNIEBETONG"

Dr. Kristian Arnt Wadel

Kristian Arnt Wadel was born in Tromso, Norway. He was a descendant of Danish royalty with a mixture of German blood. He attended schools in Tromso and graduated from the University of Oslo. He later attended the Universities of Berlin and Copenhagen. He also spent some time at several Universities of this country. In 1876 a sister came to America and was soon joined by Dr. Wadel who practiced in Portland until the 1920's when he affiliated with the Fargo Clinic where he remained until his death. Mrs. Wadel still resides in Fargo. They had two children, Frances and Doris.



Gullick H. Wastvedt

Gullick H. and Aasta Wastvedt were born in Norway June 6, 1862 and Octo-

ber 25, 1864, respectively.

Mr. Wastvedt came to America in 1869 with his widowed mother, Mrs. Wastvedt, the former Aasta Bjornson, came to America in 1187. They were married April 9, 1893. In 1903 they bought a farm in Viking Township where they lived until they moved to Hatton. Mr. Wastvedt passed away in 1945 and Mrs. Wastvedt in 1952.



George A. White

George White, a native of Michigan, was born May 23, 1857. He entered Iowa State Normal in 1874 and taught and studied until he came to Wahpeton in 1879. During 1880-81 he studied law and was admitted to the bar in December, 1881. He came to Portland the following year and established himself in the practice of his profession until the founding of the State Bank in 1886.

Mr. White was elected county superintendent of schools for Traill County in 1886.

In 1887 he married Ella S. Powers, a native of Michigan.

There are three children: Ronald, Harold and Hollos. Mr. White moved to California.

Andrew O. Thompson

Andrew O. Thompson was born in Valdres, Norway, August 9, 1845. He came to the United States in 1873, and to North Dakota in 1879 where he farmed southeast of Portland. In 1881 he married Anne Christenson; they had five sons, two who are still living, Christ and Ole.

Mr. Thompson died in 1926, his wife preceded him.



Gilbert O. Westland

Gilbert O. Westland was born in Norway, September 15, 1858.

In the early 80's he took a claim near Portland. In 1888 Mr. Westland was united in marriage to Agnes Cornelia Danielson who was born December 23, 1868 in Primrose, Wisconsin. To this union ten children were born, four of whom still live.

Mrs. Westland died November 14, 1924 and Mr. Westland May 14, 1934.

Thyke G. Thykeson

Thyke G. Thykeson was born in Wisconsin, February 9, 1853. He came with his parents to Freeborn County, Minnesota, in June 1856, and grew to manhood there. He married Elisabeth Opsahl who died in 1893. Their children were: Agnes, Anna, and Mabel.

Mr. Thykeson bought land in the Bang Community in 1896, and farmed and threshed for a number of years. Starting with a horse power rig, he later bought a steam engine.

In December, 1898, he married Mrs. Ingeborg Rud. Their children are: Christian, Ebenhard, Otto, Clarence, Elias. Mr. Thykeson died in 1933.

Osten Thykeson

Osten Thykeson was born in Freeborn County, Minnesota, in 1858. He married Elisabeth Fugleberg. They lived near Hillsboro before coming to the Portland community. They farmed several years before retiring to Portland, where Mr. Thykeson managed an elevator. They had a family of four children: George, Alfred, Arthillia, and Lillian, and one foster son, Milton Madson.

Martin Syverson

Martin Syverson was born near Kongsvinger, Norway, October 14, 1855. He came to America in 1879 and married in Worth County, Iowa. Mrs. Syverson (Turi) was born in Norway February 2, 1858. They came to the Portland area the same year and engaged in farming for many years, and moved into Portland in 1914.

Mr. Syverson died May 8, 1944.



Nels Tolen

Nels Tolen was born in Sweden, June 17, 1846. He married Mathilda Miller, Dec. 26, 1875. In 1877 they came to New York, where he worked in a piano factory. They adopted a baby girl.

His brother, Ole, had homesteaded in Eger Twp., and wanted Nels to join him. In the Spring of 1881 Nels filed his claim on the land they were to farm for 24 years. They then bought a home in Portland which they occupied for about 20 years. Nels Tolen died in 1934 and his wife in 1930.



Julius Solberg

Julius Solberg was born in Drammen, Norway, July 31, 1863. He married Sophie Magnuson in Eau Claire, Wisconsin, July 31, 1889. She was born in Sweden, April 5, 1862, and came to St. Paul at the age of twenty-one.

The Solbergs came to Portland in 1890, and Mr. Solberg worked for Foss Mercantile. Later he was manager of the Beidler-Robinson Lumber Yards, the Thompson Yards and the Farmer's Store.

Mrs. Solberg died October 10, 1925. Mr. Solberg retired in 1927 and lived in Mayville with his daughter, Mellie Brunsdale. He died December 5, 1945. One son, Harry, is deceased.



N. O. Sando

N. O. Sando was born in Trondhjem, Norway, May 4, 1834. At Rushford, Minnesota, October 12, 1872, he married Martha Kristendotter. She was born June 15, 1845, in Osterdalen, Norway. They came to Dakota Territory in 1879. Mr. Sando was a charter member of Roseville Trinity Church.

The children were: Olaf Conrad, Alfred, Julia Amalia, Kristina, Olga, Anna, Olaf.

Mr. Sando died June 9, 1905 and Mrs. Sando, April 5, 1922.

Halvor A. Sharpe

Halvor A. Sharpe was born in Norway in 1867. In 1897 he married Ida Jonson, who was born in Sweden in 1877. Mr. Sharpe was employed in the Portland Farmer's Store and various other places in Portland. In 1931 he started his own cafe and confectionery, which he operated until he retired in 1942. Mr. Sharpe died in 1944 and Mrs. Sharpe died in 1957. There were six children in the Sharpe family: Hazel, Frances, Arthur, Clayton, Dorothy, and Douglas.



Mr. and Mrs. Ole Stavedahl

Ole N. Stavedahl was born August 2, 1851, in Norway. In 1874 he married Siri Knutson. She was born April 24, 1851, in Rainli, Valdres, Norway.

The Stavedahls homesteaded in Roseville Township in 1879. They had a family of twelve children. Mrs. Stavedahl died in 1893 and Mr. Stavedahl in 1934.



Mr. and Mrs. Martin Solberg

Mrs. Martin Solberg (Marit Skogstad) was born in Valdres, Norway, April 14, 1856. After living in Wisconsin a short time, the family set out in a covered wagon and homesteaded in Traill County, five miles west of Portland.

In Bruflat she was married to Andrew Heskin in 1875, the first wedding in Bruflat history. Upon his death she was left with a large family and the farm to care for. In 1893 she was married to Martin

Solberg, who was born October 14, 1858 in Eker, Norway. He came to this area in 1884. Mr. Solberg served as a county commissioner of Traill County.

Mr. Solberg died November 6, 1942 and Mrs. Solberg, February 11, 1938.



Mr. and Mrs. Jens Strand

Anna Marie Haugen was born in Eggedal, Norway, July 12, 1850. In 1873 she immigrated from Norway to America and settled in Iowa. She worked there until 1877 when she married Finger Hanson, who was born August 31, 1845, in Eggedal. The same year they came to Traill County, and settled on a farm northwest of Portland. To this union five children were born, but all died in early childhood of diphtheria. Mr. Hanson died in 1887. In 1888 she was married to Jens Strand. Two sons, George and Theodore reside in Portland.

Jens Strand was born September 10, 1864, and came to America in 1885. He was active in community and church affairs.

Mr. Strand died in 1923 and Mrs. Strand in 1929.

Samual L. Linn

Samual L. Linn was born April 24, 1854 in Green County, Wisconsin. He came to Steele County in 1882. He married Karen Dornholdt March 12, 1878. Their daughter, Julia, was the first white child born in Sherbrooke Township, Dakota Territory. He was a member of the first Board of Trustees of Sherbrooke township and served a total of 14 years as Sheriff of Steele County. They celebrated their Golden Wedding in 1928 at the Bang Church. He died May 24, 1936. Mrs. Linn died in 1946. A son Thomas lives on the homestead.

Even Moen

Even Moen was born in Nordre Aurdal, Norway, September 11, 1869. He came to the United States with his parents in 1874. They settled in Portland.

In 1901 he married Karen Larson who preceded him in death in 1940.

Mr. Moen operated a shoe and clothing store for many years. He died in 1947.

Their son Carl lives in Fargo.

Even Larson Moen

Even Larson Moen (1855-1881), son of Mr. and Mrs. Lars Evenson Moen, born in Valdres, Norway, came to America at the age of 13 with his father, mother, and seven younger brothers and sisters. On June 21, 1871 they came to Norway Township in the first covered wagon caravan to come to settle in Traill County. In 1876 he married Anna O. Bakken (1855-1885). They had three children: Ida, Lewis, and Ole, who died at the age of two.

Jens L. Mehus

Jens L. Mehus (a brother of Lars L. Mehus) was born in Norway, July 26, 1855. He came to America about 1870. He was superintendent of schools of Traill County for three years and was the first teacher of the English language in this county. He was called by Bruflat Congregation to be its parochial school teacher, because he was competent in both the Norwegian and English languages.

He died September 22, 1881.

Lars L. Mehus

Lars L. Mehus was born in Norway in 1849, and came to the United States in 1870. He was married in Illinois, in 1871 to Ingeborg Tveet, who was also born in Norway, in 1848. Their children were: Lily, Julia, Annie, Lewis, Christian, Thomas, George, who passed away in infancy, and Tom. Mr. Mehus came to Dakota Territory in the spring of 1877 and located near the south branch of the Goose River, and moved further west in the county in 1879. Mr. and Mrs. Mehus moved to Portland in 1904. Mrs. Mehus died in 1919. Mr. Mehus passed away in 1924.

John Lindelien

John Lindelien was born in Wisconsin September 26, 1872. At the age of ten he came to Traill County with his parents, and when thirteen began working for the "Portland InterOcean". In 1890 he went to Osakis, Minn. In 1894 he returned and began to work with the "Portland Press", and later with the "Portland Republican". He became editor and manager in 1898. He later moved to Pingree. In 1900 he married Agnes Lindquist and had one child Esther.

Mr. Lindelien died in 1945.

Ole Odegaarden

Ole Odegaarden was born in Norway on November 14, 1866. He moved to the Portland area in 1878. He was the brother of Arne Odegaarden, Mrs. Kville, and Mrs. A. Stavedahl.

Mr. Odegaarden died in 1943.

Nils Nerdalen

Nils Nerdalen was born in Norway, April 22, 1865. He came to Portland in 1887. In 1892, at Hillsboro, he married Helga Klev, who was born in Eggedal, Norway, February 21, 1870. He moved to his own farm where he lived fifty one years, until his death in 1951. Mrs. Nerdalen died in 1945. There were eight children: Helene, Alma, Ada, Molly, Norma, Edgar, Helmer, and Norval.

William Proctor

William Proctor was born February 6, 1862, in Fayette, Wisconsin. He owned and operated a meat market with Ed Cross, a nephew, as a partner. When Ed Cross left for Fessenden, Mr. Proctor continued in this business until he retired in 1938.

He died the same year. His wife died later in California.

They had four children: Olive, Cecil, Sara, Ralph. They also reared a grandson, Loren Proctor.

Anton Pederson

Anton Pederson was born in Hedemarken, Norway, Dec. 2, 1861, and came to Portland in 1881. He married Lena Eng in June, 1887. Mr. Pederson farmed west of Portland until 1918 when he moved to town. A son, Clarence, was killed in world war I. Mrs. Pederson preceded him in death. Mr. Pederson died in 1948. They had a family of eleven children.

Orville De Forest Patterson

Orville De Forest Patterson was born in Beaver Dam, Wisconsin, September 29, 1858. In Portland, August 21, 1891, he married Emma Monson. She was born September 27, 1867, in Moscow, Wisconsin; she came to Portland in 1879.

Mr. Patterson was grain elevator agent until his departure for Houston, Texas, where he died. His wife died in 1956.

There were three children: Orville, Echo, and Wallace.

Kristian Sulland

Kristian Sulland was born in Modum, Norway, September 13, 1858. In 1881 he came to Dakota Territory and homesteaded in Edendale Township. The same year he married Karoline Kville. Mr. Sulland was County Commissioner, and held various offices in the township and county. His wife was a charter member of Perry Ladies Aid.

In 1927 the Sullands moved to Mayville, where Mr. Sulland died in 1929, and his wife in 1943. Their three daughters were: Ella, Hilda, and Clara (deceased).

Lauritz M. Syverson

L. M. Syverson was born in Worth County, Iowa, October 15, 1879 and came with his parents to the Portland area shortly afterwards.

His wife was born in Enger Township November 16, 1878. Mrs. Syverson was one of the first white children born in that Township, seeing the first light of day in a dugout on a hillside. Mr. and Mrs. Syverson were married at Hillsboro, October 4, 1899. They lived on their farm until they moved to Portland a few years ago.

Nels Skogstad

Mr. and Mrs. Skogstad came from Norway in a sailboat. After living in Wisconsin, they came with their family to Dakota Territory in 1874. They were the first white people to settle in Primrose Township. Their daughter, Nellie, was the first white child born in that township and the first child baptized in Bruflat church. Mr. Skogstad was the first secretary of the Bruflat congregation.

Samuel Skogstad

Samuel Skogstad was born in Wisconsin in 1869. With his parents, the Nels Skogstads, he came to Portland in 1874. Living now in Bagley, Minnesota, he is the only living charter member of Bruflat congregation.

Arne P. Stolan

Arne P. Stolan was born in Valdres, Norway, July 18, 1855. In 1878 he married Astri Sletten, who also was born in 1855. They came to the Portland area in 1880. Mr. Stolan first worked for Knut Haugen. About 1883 he settled on land near Portland. In 1899 he moved to Fosston, Minnesota.

His wife died in 1936 and he in 1946. Their children were: Inga, Peter, Ludvik all three now deceased, and Alfred and Adolph.

T. O. Schjeldahl

T. O. Schjeldahl was born in Voss, Norway, November 3, 1849. He came to America in 1874 and to Portland in 1877. He homesteaded in Enger Twp. He married Martha Bjorgo in 1879. She died in 1889. In 1892 he married Thora Thorson who died in 1933. He died in 1928.

S. C. Swenson

S. C. Swenson was born January 29, 1853 in Wisconsin. He married Bertha Maria Melby February 8, 1878 in Fillmore County, Minn. Mr. Swenson was a supervisor of the Roseville Township board. For fourteen years he was county commissioner, during which time the present court house was built. He was a state representative in the sixth legislative session. In 1878 they joined Bruflat congregation he was a member of the building committees for church and parsonage. He died March 17, 1931.

Iver Storland

Iver Storland was born in Norway, August 3, 1851. In 1878 he came to the Portland area. He married Anna Rachel Monson in 1881.

The Storlands farmed near Portland until they moved to Texas. Their children were: Eva, William, Irvin, and Claudie.

Sherman J. Smith

"Sherm" Smith was born on January 11, 1866. In 1881, with his parents, he came to Portland. His parents started one of the first hotels here. "Sherm" acted as the first overland carrier to Larimore. He took over the hotel business and later became interested in the real estate business.

He was an officer in banks in Portland. He was Mayor and Chairman of the Board of Education. At the time of his death in 1939 he was a member of the Traill County Welfare Board.

His first wife died in 1918. In 1929 he married Laura Lowe of Northwood, Iowa.



Engebret Stenerson

Engebret Stenerson was born in Norway, August 27, 1864, and came to this country in 1855. In December 1892 he married Olivia Johnson. They had one son and one daughter, Betsy and Johannes. Mrs. Stenerson died in 1948, Mr. Stenerson in 1949, Johannes in 1949, Betsy in 1953.



Helge H. Skadeland

Helge H. Skadeland was born in Sigdal, Norway, February 28, 1843 and received his education in that country. At the age of twenty-two he came to the United States. In 1867 he was married to Anne Bugland. They had five children: Halvor, Narve, Gunder, Aase, and

Gilbert. Mrs. Skadeland died in the fall of 1874. In 1878 he moved to Dakota Territory.

On March 24, 1880 he was married to Eli H. Ansten. They were the parents of 11 children. There are at present six children living: Aase, Netta, Christine, Tommy, Ingvald and Christ.

Mr. Skadeland passed away March 20, 1934 at the age of 91.



Mr. and Mrs. Anders Skarperud

Anders Skarperud was born in 1843 in Telemarken, Norway. In Seljords Hovedkirke he married Live Olson, who was born in 1843. They came to Iowa in 1870, and to Dakota Territory by covered wagon and oxen in 1874. They lived in the wagon until a loghouse was built. They were charter members of Aurdal Church. There were five children: Osmond, Oline, Klara, and Mrs. Andrine Grinley, the only survivor. Mrs. Skarperud died in 1882. In 1883 Mr. Skarperud married Marit Fjeld, who was born in Valdres, Norway, in 1863. Their children are: Mary, Henry, Clarence, Andrew, Clara, Orville, and Arthur. Mr. Skarperud died in 1921, and his wife in 1941.

Mr. and Mrs. William Sparrow

William Sparrow was born in England in 1849. His wife, Mary Campbell Sparrow, was born in England in 1858. In 1891 they came to North Dakota and farmed in Primrose Township. The later years of their lives were spent in the city of Portland.

Twelve children were born to them: Edward, Albert, Thomas, Joseph, David, Harry, Elizabeth, Margaret, Martha, Jennie, Allgeretta, and Florence.



Mr. and Mrs. L. Stenerson

Lars Stenerson was born June 22, 1861, in Eggedal, Norway. He came to America in 1881, first arriving at Norway Lake, Minnesota to visit relatives. When he came to Portland he worked on the Grandin farm.

In 1886 he married Ingeborg Stalsbraaten, who was born in Eggedal, Norway, October 8, 1853.

In 1917 he retired and purchased a home in Portland, where they lived nine years. Mr. Stenerson died September 20, 1920, and Mrs. Stenerson, March 16, 1923. Six children were born: Stener, Helen, Belinda and Hilda (all deceased), and Carl and Clara.

Knute Sundby

Knute Sundby was born in Norway May 24, 1847. In 1871 he married Karen Dahl. They came to Portland in 1900, living on the farm now owned by Henry Hanson. Three children, Randi, Nels, and Susane, are deceased. The other members of the family are Maren, Jorgen, Hanna, Nicoline, and Nels.



Mr. and Mrs. Jorgen Sundby

Jorgen Sundby was born in Norway Township, Traill County, May 22, 1879. July 29, 1911, he married Thea Heskin. A daughter of Ole N. Heskin, she was born February 7, 1887, on the present Orlo Heskin farm. They moved to a farm in Sherbrooke Township, in October 1911 and lived there until moving to Portland in 1944.

They had four daughters Mildred, Esther, Clara, and Ruth (deceased).



Mr. and Mrs. Halvor J. Rindy

Halvor J. Rindy was born in Norway, November 25, 1858. In the spring of 1879 he filed a claim in Primrose Township, Steele County.

He was married to Margretha M. Brader in 1881. She was born in Carver County, Minnesota, December 16, 1860. When they came to Dakota they had a team and six head of cattle and a few chickens.

He served three terms as county commissioner and two terms as register of deeds.

Mr. and Mrs. Rindy were the parents of fifteen children: John H., Frederick J., Maria, Frederick N., Henry W., Hilda M., Hilda, Clara J., Lillian, William H., Clara, Oscar, Mae, and Edwin.

Mr. Rindy died October 10, 1937, and his wife, November 13, 1950.

Joseph LeBell

Joseph Clayton LeBell was born in Bloomer, Wis., May 22, 1882. When he was 17 he went to Nicollet, Minnesota to learn the printers trade under his two brothers.

On May 9, 1904 he was married to Bertha Marie Olson of Bellingham, Minn. They came to Portland in December of 1905 purchasing the Republican from John Lindelien. He lived here until his death on April 8, 1937.



The Rud Family

BACK ROW Gunhilda, Christina, Gilbert, Iline, Ole, Gunda, Eric.

FRONT ROW — Andrew, Halsten, Christian, Gunder.

Halsten Rud and his older sister, Beret, came to America from Valdres, Norway

with their parents, Christopher and Anne Rud, and their six brothers, Gunder, Ole, Andrew, Christian, Gilbert, and Eric, and four sisters, Oline, Gunda, Gunhilda, Christina joined them.

In the spring of 1878 Halsen with his brother, Gilbert, came to Fargo. Halsten returned to Minnesota and the following summer arrived with his parents, brothers and three sisters.

Until a log house was built the family lived in a sod dugout in the hillside.

Beret married Hans Olson. After her death Mr. Olson married Gunda Rud who helped raise his seven children.

Oline married Christian Swan, Gunhilda married Thomas Walstad, and Christina lived with her sister, Gunhilda.

Andrew C. Rud was born April 25, 1856, in Norway, coming to America in 1875, and in 1879 to Portland. In 1885 he married Ingeborg Linn. The mother and one child died in 1886. In 1894 he married Julianna Kopperdahl. Their six daughters are Amanda, Claudine, Ingeborg, Josephine, Selma and Carine. The son and one daughter preceded him in death.

Gunder Rud was born November 30, 1863. He came to Portland in 1879 and homesteaded. In July 1883 he married Anna Evenson. They had four daughters: Clara, Inga, Carine and Anna. He served as song leader (Klokker) for 35 years in Bang Church. He died October 12, 1929 and she died July 12, 1950.

Ole Rud was born November 13, 1851 in Norway, and came to America in 1879. In 1883 he married Beatha Tollefsrud. They had three children: Carl O., Ida, and Olga. Ole died January 20, 1907.

Christian Rud was born in Norway in 1854 and came to Portland in 1879. In 1894 he married Ingeborg Klath. They had one child, Anne. Christian died in 1895.

Gilbert C. Rud was born January 6, 1853 in Norway and came to Primrose Twp. in 1878. In 1898 he married Lena Lee. He died in 1937. Their children were: Agnes, Rocelia, Christine, Theodore, and Gunda.

Halsten Rud was born in Norway in 1845, and in 1878 homesteaded west of Portland. In 1881 he married Lizzie Robin who died in 1893. In 1896 he married Jensine Melseth. She died in 1944. There were six children: Carl H., Arthur, Norman, Selmer, and Julia.



Mr. and Mrs. Lars L. Rockney

Lars Rockney was born in Voss, Norway, March 25, 1834, and died December 7, 1913. In 1854, he married Anna Helgeson, who was born February 4, 1838. She died January 17, 1911. In the spring of 1878, they came to Portland in a covered wagon, and homesteaded in Roseville Township. They had a family of five girls: Louisa, Martha, Helen, Clara, Ella and five boys: Henry, Obbie, Herbert, Albert, and Bennett.



Mr. and Mrs. Fingal Rugland

Fingal Rugland was born and raised in Norway.

He came to America as a young man and lived for some years near Northwood, Iowa. There he met and married Agnette Jahr.

They came west in 1874 and homesteaded on land near the present town of Portland.

Fingal Rugland built one of the early store buildings in Portland and it was sometime owned by his brother Stephen and later by Torgerson and Thorson. The building was destroyed by fire and the lots were sold to the Farmers Bank.

They had a family of nine children;

three died in infancy: Clara, Theodore, Sophia, Mathilda, Francis and Spencer (deceased).

Mr. Rugland passed away in 1892 and Mrs. Rugland in 1906.



Mr. and Mrs. Bennett E. Rockney

Bennett E. Rockney was born May 15, 1874 in Fillmore County, Minnesota. He settled on a farm one mile south of the Roseville Station. After the death of his parents he managed the farm and also was manager of the PV Elevator at Roseville for twenty years. About fifty-five years ago he organized a band called the "20th Century Concert Band". The band was considered one of the outstanding bands at that time.

He married Sophia Koppang, November 30, 1911. She was born south of Portland on February 29, 1880.

They lived in Portland where Mr. Rockney had charge of the Farmers Elevator for two years.

They had one son Vaughn who is with the U. S. Weather Bureau at Washington, D. C.

Mr. Rockney died April 2, 1942 and Mrs. Rockney, July 16, 1943.



Mr. and Mrs. Syver K. Pladsen

Syver K. Pladsen was born August 27, 1858 at Etnedalen, Norway. He emigrated to the United States in 1877 and arrived in Portland in 1878.

Mrs. Pladsen (Karen Beata Evenson) as born at Toten, Norway, September 18, 1865 and came to Wisconsin in 1873 with her parents, Mr. and Mrs. Peder Evenson. In 1881, they arrived in Portland.

Mr. and Mrs. Pladsen were married September 28, 1883. He was a charter member of the Perry Lutheran Congregation which was organized in 1884.

They were the parents of eleven children: Inga, Carl, Emma, Clara, Ida, Helga, Alma, Tilda, Nina, Dagny, and Edwin.

Mr. Pladsen died April 17, 1945 and Mrs. Pladsen, April 11, 1941.



Mr. and Mrs. Paul M. Paulson

Paul M. Paulson was born near Northwood, Iowa, March 27, 1868. He first visited Dakota Territory in 1878, making the trip north by covered wagon and returned by train. Coming back to this area in 1880 he spent some time at "Old Mayville". In 1891 he helped start a bank at Northwood, and in 1892 began working in the Portland State Bank. He continued in the banking business in Portland until 1950 when he retired. In 1908 he married Agnes Berrington of Mayville, who had taught school in Portland for several years. Mrs. Paulson passed away in 1952. They had two children, Marjorie and Philip.



Mr. and Mrs. Ole Paulson

Ole Paulson was born in Stange, Nor-

way, in 1859. He came to America in 1867. In 1881 Mr. Paulson purchased his first quarter section of land in Primrose Township, Steele County. He married Sella Eide in 1889. They had four children: Oscar, Clara, Selmer and Albert. His wife died in 1897. In 1898 he married Bertha Anderson a native of Norway, who came alone, when eleven years old, to Grafton to live with a sister. Their children are: Alvin, Sella, Peter, Julia, Oline, George, Joseph, Helen, Annie, Berthel, Harold, and Paul.

Mr. Paulson served two terms as a member of the state legislature. He died in 1941 and his wife in 1956.



Mr. and Mrs. A. G. Odegaarden

Arne G. Odegaarden was born in Norway, March 18, 1870. He came to America with his parents and seven brothers and sisters and settled in Wisconsin in 1877. The following year they came to Dakota Territory and homesteaded nine miles southwest of Portland.

The first winter was spent in a sod hut dug into a hill.

In 1899 he married Thora Brenden. She was born in Norway, May 25, 1875. They had three children: Olga (deceased), Anna and George.

Mr. Odegaarden passed away in 1954 and Mrs. Odegaarden in 1955.



Mr. and Mrs. Thor Pederson

Thor Pederson was born in Sigal, Norway, June 5, 1849, and came to Portland in the spring of 1874 in a covered wagon. He married Marit Heskin, who was born in Etnedalen, Valdres, Norway, December 12, 1845. Their first home was a dugout where they lived until a log cabin was built. He was active in the establishment of the Aurdal Congregation. He died June 10, 1916. Their children were Gunhild, Anna, Peter, Nils, Gilbert, and Henry.



Mr. and Mrs. G. O. Odegaarden

Gunder O. Odegaarden was born in Valdres, Norway, August 30, 1836. His wife, Oloug, was born February 25, 1837. They were married in Reinli, Valdres, Norway.

In 1876 they came to Dane County, Wisconsin. In 1878 Ole Kensrud met them with covered wagon and brought them to Portland. Gunder worked for Fingal Enger, and helped build the old log house. They homesteaded in Primrose Township, in Steele County.

Their children were: Gunhild, Anna, Andrew, Gunder, Arne, Ole (all are deceased), and Gunhild Kville and Hannah Stavedal.



Mr. and Mrs. James Power

James Power was born in Birkenhead,

England on April 20, 1857. He came to the United States with his parents when three months old, settling in Tuscarora County, New York. Shortly after the Civil War his parents moved to Kasson, Minnesota.

Mr. Power came to Portland in the spring of 1882 and opened a harness shop. He continued in that business in Portland until 1940. He served as Postmaster for over 20 years.

Mr. Power was married to Louise Holm at Portland on August 5, 1889. Mrs. Power was born at Arkdale, Wisconsin on December 5, 1858. She came to Portland in 1885 as one of the first teachers in the Portland schools. The fathers of both Mr. and Mrs. Power had served with the Union Army in the Civil War, being with General Sherman on his March to the Sea.

Mrs. Power died on March 5, 1942 and Mr. Power on April 10, 1943.



Mr. and Mrs. Sander Olson

Sander Olson (Sanderson) was born in Wisconsin, October 10, 1853. He came to the Portland area in 1878. In 1880 he married Gunilla Maria, who was born in Norway, September 20, 1856. They purchased the first school building in Portland which had been remodelled into the first Aurdal Church. It is now the present farm home of Mrs. Sophia Sanderson.



Mr. and Mrs. Henry Nelson

Henry Nelson came to America in 1885. He came to Portland in 1886 and was employed in the Hughes Blacksmith Shop. Later he and his brother Olaf started their own shop. In 1897 Olaf moved to Clifford and started his own shop there.

Henry Nelson married Lena Flesche in 1890. They had three sons: Norman, Ingvald and Henry Jr. Mrs. Nelson died in 1897.

In 1899 he married Julia Dolvin, who came here from Whitehall, Wisconsin. Their children are John, Luella, Lillian, Gladys Hazel, Jane, Ester and Lawrence.

Mr. Nelson was born in Salhus, Norway in 1866 and died in 1937. Mrs. Nelson was born in 1876, and now lives in Richmond, California.



Mr. and Mrs. Bottolf Nelson

Bottolf Nelson came from Norway in 1882. He farmed land bordering the Goose River east of Portland. He married Gertrude Evanson whose family had come here in 1872. They had ten children, nine of whom are living: Edwin, Norval, Alvin, Bernhard, Clara, Alma, Mary, Inez and Manda.



Mr. and Mrs. Henry H. McNair

Henry H. McNair was born in Lima, New York in 1854. He graduated from

Yale University. He came to Dakota Territory in 1882, filing on a claim near Larimore. In 1888 he married Mrs. E. E. Neste. Mrs. Neste was born in Arkdale, Wisconsin in 1859. Mr. and Mrs. Neste moved their general store from Blanchard to Portland in 1882, becoming the first general store in the new town. Mr. Neste died in 1884, leaving the widow and one daughter. In 1898, the McNairs moved to their 600 acre farm west of Portland, where they lived until they retired in 1926. Mr. McNair served various local offices and as State Senator.

Their children are: William R., Ann, Ruth, Ione, Marion, H. Warner and Frances. The last two have passed away.

Mr. McNair died in 1945 and Mrs. McNair in 1941.



Mr. and Mrs. Gilbert H. Moen

Gilbert H. Moen was born in Norway Township in 1874, the son of Hans and Sigri Moen who came to the Goose River Valley, June 21, 1871. He homesteaded at Pleasant Lake in 1899. In 1902 he married Ida E. Moen at Rugby. They celebrated their Golden Wedding in 1952. Mr. Moen died in 1957.

They have eight children: Anna, Ellen, Josie, Ingvald, Martha, Lawrence, Margaret and Glenn.

Mr. and Mrs. Albert I. Knudson

Albert I. Knudson married Torbjor Eitrem in Wisconsin, February, 1879. He came directly to file on a claim in Roseville township while she worked in Fargo. He brought his wife in May 1879. They had eleven children, five boys are deceased. Living are Elmer, Amanda, Alma, Thea, Edith, and Anna.



Mr. and Mrs. Peter Monson

Peter Monson was born in Madison, Wisconsin, March 23, 1863, coming to Portland in 1882. In August 1884, he married Kari Flesche, who was born in Sun Prairie, Wisconsin, July 25, 1857. They were married for 66 years.

Mr. Monson operated a livery, dray-line, and restaurant.

Three of eight children survive them. They are Lena, Oscar and Walter.

Peter died on August 4, 1950, and his wife, March 20, 1951.



Mr. and Mrs. Halleck E. Lucken

Halleck E. Luken was born July 1, 1850, in Wisconsin. In Ossian, Iowa, July 3, 1877, he married Belle Anderson, who was born December 19, 1850, in Bergen, Norway. The Luckens came to Portland in June 1878. Mr. Lucken was county commissioner when the county seat was Caledonia.

There were four daughters: Lillie, Emma, Etha, and Bertha.

Mr. Lucken died in 1924, and his wife in 1935.



Mr. and Mrs. Ole C. Lee

Ole C. Lee was born in Toten, Norway, December 13, 1839. In July 1882, he was married to Tonette Wold. She was born in Bang, Norway, May 28, 1851. She came to Portland in 1880. They farmed in Primrose Township until Mr. Lee's death April 9, 1907. She died January 21, 1920.



Mr. and Mrs. Tollef Larson

Tollef Larson was born in Toten, Norway, November 9, 1859. He came to America aboard a sailing vessel, the journey lasting thirteen weeks. In 1882 he came to Steele County, Dakota Territory. In 1884 he and Ingeborg Anderson were married. She came to the United States in a steamship which took sixteen days. She was born in Etnedal, Valdres, Norway, June 21, 1860.

Mrs. Larson took her sewing machine from Wisconsin into Dakota. It was the only machine in Golden Lake area and she was kept busy sewing shirts and trousers.

Mr. Larson died September 16, 1898, and his wife, March 24, 1934. Their children were: Lewis, Andrew, Lawrence, Selmer, Anna, Alvin, and Martin.



Mr. and Mrs. K. J. Lucken

Kristian J. Lucken was born in Gudbrandsdalen, Norway, in 1862 and came to America in 1881. He came directly to North Dakota.

Mr. Lucken was married to Anne Heskin in 1890. To this union seven children were born: Joseph, Alfred, Ida, Henrik, Bernt, Melvin, and Carl.



Mr. and Mrs. Reier Kvernen

Reier Kvernen was born in Valdres, Norway, January 8, 1855. Olia Stavedalen was born in December 1865 in Valdres, Norway. They were married in Portland, November 15, 1888. Mr. Kvernen helped organize Perry Church. Their children are: Inga, Oscar, Alma, Arthur, and Betsy. Mr. Kvernen came to America in 1878, and in 1890 to Dakota Territory. Mr. Kvernen died May 23, 1936 and Mrs. Kvernen, April 25, 1926.

Mr. and Mrs. Anton Hovick

Mr. and Mrs. Anton Hovick came to Portland in 1886. The Hovicks lived in Portland and Hatton for forty years. Mr. Hovick built many homes in this community. In 1926 they moved to Bellingham, Washington where Mr. Hovick

died in 1946, and his wife in 1950. Mrs. Nora Johnson is one of their eight children.



Hans Krogh

Hans Krogh was born in Sogn, Norway, April 1, 1853. He married Martine Hermanson in 1874. She was born in Bergen, Norway, February 23, 1885. Mr. Krogh arrived in Chicago in 1874, and was joined by his wife and oldest son in 1876. In the fall of 1881, they arrived in Mayville on the first train. He homesteaded in Roseville Township, and the family lived there until 1910, when Mrs. Krogh died.

Mr. Krogh taught school and farmed in Steele and Traill Counties. He was Secretary of the Farmers Mutual Insurance Company for twenty five years. He died November 20, 1931.

There were eleven children: Arnold, Arne, Sophie, Anna, Harold, Lydia, Herman, Emma, Einar, Olga, and George.



Mr. and Mrs. Ole T. Kensrud

Ole T. Kensrud was born in Valdres, Norway, February 4, 1848. He came to

Wisconsin in 1867 and arrived in Traill County between 1874 and 1877. He married Johanne Hovde who was born in Etnedalen, Norway, February 28, 1863. They lived in a dugout until a one room frame house was built.

The Kensingruds had fourteen children, of whom the three oldest died of diphtheria. They are: Anne, Tidemand, Nepolaus, Tilda, Alfred, Torman, Anne Tilma, Nils, Jorgine, Olander, Konstance, Dusie, Esther, and Ida.



Mr. and Mrs. Simon K. Kringlie

Simon Kringlie was born in Valdres, Norway, on April 14, 1857. He came to Dakota Territory in 1857 and homesteaded nine miles southwest of Portland. He was married in 1891 at Portland to Karen Mathia Hesekind who also was born in Valdres, July 24, 1863.

For a time Mr. Kringlie carried mail and passengers from Portland to Sherbrooke and Finley, making one round trip daily with horse and buggy. In 1902 he was appointed first carrier for the rural free delivery from the Portland postoffice. He was appointed postmaster in 1916.

In 1898 Mrs. Kringlie opened a dress-making shop in Portland. Later she had a millinery store and taught and employed young women. She disposed of her shop in 1915, but continued dressmaking for several years.

Mr. Kringlie died in 1939 and his wife in 1956.



Mr. and Mrs. Erick Kjensrud

Erick Kjensrud was born January 21, 1846 in Norway. In Wisconsin he married Karine Gjermunds-datter on May 28,

1870. She was born in Wisconsin in 1849. They moved to Traill County in 1877. There were ten children: Tidemand, Anna Christine, Torgrim, and Edwin are deceased. Living are George, Paul, Clara, Olga, Thorvald and Tidemand Edwin. Mr. Kjensrud died in 1923 and his wife in 1893.

Johannes Kopperdahl

Johannes Kopperdahl was born in 1836. He was the first parochial school teacher in the Bang congregation. For many years he lived in a dugout near where Ted Groven now lives. He died in 1926.

Mr. and Mrs. Thomas Higdem

Thomas Higdem was born in Valdres, Norway, in 1851. His wife, Andrea Sletten, was also born in Norway in 1860. They came to the Portland area in the eighties and farmed in Primrose Township. They had a family of ten children, five of whom are living: Lewis, Alfred, Adolph, Tilla, and Anna.

Mr. Higdem died in 1928, his wife in 1937.

Mr. and Mrs. Christian Kvernen

Christian Kvernen, an early blacksmith of Portland, was born in Valdres, Norway, June 15, 1858. He left Norway in 1875 and came to Black Earth, Wisconsin. In 1880 he came to Portland. He married Julia Reierson. They had two sons.

After a few years, the family moved to Fosston, Minnesota, where Mr. Kvernen farmed. He died in 1942.

Mr. and Mrs. Ole N. Hem

Ole Hem was born in Norway, June 16, 1857. After completing his education, he came to America at the age of 22. In 1882 he came to Portland and worked in a hardware store, and then assumed, in 1884, the management of Beidler and Robinson Lumber Company.

In 1883 he married Amelia Engeland, a native of Norway. Eight children were born to the Hems: Nils, Hans, Gina, Ida, Otto, Effie, Alpha, and William.

Mr. and Mrs. Jacob Kern

Jacob Kern came to Portland in 1882. In April, that year, he married Lena Gilbertson, born in Norway, September 14, 1862.

Mr. Kern was sheriff of Traill County, when the county seat was Caledonia. He was in the machinery business in Portland, and later the coal and insurance business. He died in 1935. In 1938 Mrs. Kern went to Bozeman, Montana to live with her daughter. She died in 1940. Their children were: Melville, William, Lewis and Lillian.

Mrs. Anoline Hanson

Anoline Hanson was born in Kopervik, Norway, April 9, 1833. Her husband, Jens, was drowned at the age of 50. Mrs. Hanson came to Portland in 1890.

"Bestemor" Hanson, as she was affectionately called by all who knew her, was trained in Oslo, as a mid-wife. She was much in demand and was often called to farm homes within a radius of 10-12 miles of Portland and Mayville.

She never placed a charge on her services but was always happy to help those who needed her.

Her children were Mrs. Hans Jenson, Adolph and August Carlson. She died January 5, 1919.

Mr. and Mrs. Knute O. Haugen

Knute Haugen was born in Norway in 1843, and at the age of 26, emigrated to America. After a brief stay in Wisconsin and Iowa he set out for the Red River Valley, arriving there on July 10, 1873.

In 1870 in Wisconsin he married Kjerski Rodingen, who came to this country with her parents in the early 1860's. Their family consisted of seven children, three of whom died in the diphtheria epidemic. The remaining children are Ole, (deceased), Carl, Oscar, and Mrs. Martin Amb. Both Mr. and Mrs. Haugen were charter members of the Aurdal Church.



Mr. and Mrs. Andrew Koppang

Andrew Koppang was born in Osterdalen, Norway, July 28, 1842. Arriving in America about 1874, he came to Traill County in 1881 and farmed southwest of Portland in Roseville Township. His wife was born September 26, 1836.

The Koppangs had six children: Christen, Thorvald, Albert, Ole, Christ, and Ida. When Mr. Koppang retired, they lived in Portland several years. Mr. Koppang died June 1, 1923, and his wife January 12, 1926.



Mr. and Mrs. Knut S. Knudson

Knut S. Knudson was born at Sondre-Aurdal, Valdres, Norway on March 1, 1855, emigrating to Broadhead, Wisconsin in 1875. In March 1879 he married Caroline Hanson who was born in Christiania, Norway, October 17, 1855. Mr. and Mrs. Knudson came to this area in the spring of 1879.

Born to this union were Carl, Ingval, Odin, Axel, Cora, Anna, and Valborg. The Knudsons were charter members of two pioneer churches, Bang and Perry. Mr. Knudson passed away November 6, 1939 and Mrs. Knudson on April 4, 1936.

Portland, now the Mrs. Norstebon forty.

A daughter, Mrs. Andrew Moen, lives at Nielsville and is 86 years old. She taught school in the early nineties.



Mr. and Mrs. Lars R. Haugen

Lars Haugen was born in Eggedal, Norway, October 26, 1875. He came to the United States with his parents, Reier and Beret, when he was five years old. They arrived in New York, May 20, 1880.

In 1907 he married Belinda Stenerson, who was born December 3, 1887. Their children are: Bertha, Ida, Herman, Ludvig, Norman, Gilmen, Helen, Sophie, Corrine, Lloyd and Lars.

Mr. Haugen died November 9, 1940 and Mrs. Haugen, in 1948.

Mr. and Mrs. A. M. Hanson

Andrew M. Hanson was born in Denmark, October 1, 1860. On October 6, 1894 he married Golla Margrethe Hanson, who was born at Trondhjem, Norway, May 17, 1868. The Hansons moved to a farm at Primrose Township in March 1895. Mr. Hanson died October 13, 1907 and Mrs. Hanson died July 2, 1944.

Mrs. Petra Hogfoss

Mrs. Hogfoss was born March 18, 1851, in Nes, Aardalen, Norway. She came to Portland in 1887 with her husband, Gudbrand, and four sons. Mr. Hogfoss died in 1889. After her husband's death, she worked hard to keep her family together. Although totally blind several years, she did her own housework. She died March 19, 1933. The sons were: Nels, Christian, Andrew, and John.

Mr. and Mrs. O. K. Haugen

Ole Knudson Haugen was born in Norway in 1816, and his wife, Mari, in 1813. They were married in 1840. They emigrated to America in 1869, but did not settle in the Portland area before 1873. Their seven children were born in Norway, and with one exception, all came to America and settled in this vicinity. They were: Marit, Knute, Anne, Ole, Ragnhild, Kari, and Olea. Mr. Haugen died in 1891 and his wife in 1907.

Mr. and Mrs. Nils N. Hovde

Nils Hovde was born in Valdres, Norway, in 1830. He married Jorgine Tangen, February 28, 1839. Nils came to Portland about 1879, and his wife and son, Nils, came in April, 1880. They farmed until they moved to Portland. To this union seven children were born: Erick, Johanne, Nekolme, Nils, Nekolai, Ingvald, Ingeborg. Nils Hovde died in 1907, and his wife in 1919.



Mr. and Mrs. Ingvald Hanson

Ingvald Hanson was born at Gimsoy, Lofoten, Norway, on June 7, 1863.

In 1886 he came to Portland. In 1889 he bought the farm in Primrose Township where he lived until his death in 1951.

He married Marthea Syverson (born in Aust Marka, Kongavinger, Norway, August 27, 1867) November 17, 1891 at Hillsboro.

His wife and three children, Hans, Ella, and Christine live on the original farm.

Nils H. Heskin

Nils H. Heskin was born in 1873, in Black Earth, Wisconsin. He came to Dakota Territory with his parents, Hendrick and Inger Heskin, in 1874. He lived on his father's farm until 1944, when he retired and moved to Portland. Mr. Heskin died in 1953.

Mr. and Mrs. Elling Hermanson

Elling Hermanson was born in Bergen, Norway in 1826. His wife was also born in Bergen in 1815. They came to Portland in the 80's.

Mr. Hermanson died in 1894, and his wife in 1903. They were the parents of Mrs. Hans Krogh.

Mr. and Mrs. Ole K. Haugen

Ole K. Haugen was born September 28, 1873, near Portland. In 1892 he married Ingeborg Fauske, who had arrived from Norway in 1858. Their family consists of Carl, Clara, Julius, Hannah, Eva, and Maren.

Mr. Haugen was very much interested in local history, and during the last months of his life he wrote a detailed and interesting account of his family's experiences.

Mr. Haugen died in 1944. Mrs. Haugen, at 89, is one of the community's oldest pioneers.



Mr. and Mrs. Tosten Klabo

Tosten Klabo was born at Northwood, Iowa, May 8, 1861. His wife, Barbro Rugland Klabo, was also born at Northwood, Iowa, on November 3, 1855. They were married in Iowa, February 2, 1882.

In 1906 they came to the Portland

area, but before that to Hatton Territory in 1883, making Portland their shopping center.

Their family consisted of six sons, all living, and one daughter, Mary, deceased. The sons are Oscar, Carl, Gilbert, Selmer, Henry, and Clarence.

Mr. Klabo died September 27, 1926 and Mrs. Klabo, December 4, 1934.



Mr. and Mrs. Ole C. Koppang

Ole C. Koppang was born at Osterdalen, Norway, October 18, 1847. He came to America in 1869. His wife, Gurine Treseng, was born in Osterdalen, Norway, January 25, 1852. They were married in St. Paul in 1875.

Mr. and Mrs. Koppang came to Traill County in 1879.

They had ten children: Selma, Randina, Sophia, Selmer and Alfred (all deceased); and Olga, Christian, Selma, Christina and Minnie.

He died October 7, 1914 and Mrs. Koppang, September 26, 1928.



Mr. and Mrs. Hans Klubberud

Hans Klubberud was born in Bagnadalen, Norway, January 15, 1834. His wife, Guri, was born in Hedalen, Norway, August 27, 1842. In 1877 they came to Portland walking from Caledonia. They settled one mile west and north of



Mr. and Mrs. Hendrick Heskin

Hendrick Heskin was born in Valdres, Norway, in 1839 and came to America in 1861. Mr. Heskin settled at Black Earth, Wisconsin.

He married Inger Espelien in 1866. To this union seven children were born: Anne, Ingrid, Kari, and Nels were born in Wisconsin and came to North Dakota with their parents in 1874; Gunhild, Anders and Knute were born here.

The Hendrick Heskin homestead is now owned and occupied by Bernt Luc-ken.



Mr. and Mrs. Norval O. Heskin

Norval O. Heskin was born near Portland, North Dakota June 26, 1885. He married Maria Rindy Eide November 27, 1912. She was born January 8, 1885, near Portland. In 1942 he retired from farming and moved to Portland.

The Heskins have six children: Myrtle, Helen, Orlo, Thelma, Norman, Milton.

Mr. and Mrs. Lars P. Hoiland

Lars P. Hoiland was born in Voss, Norway.

His wife, Anna Langeteig, was born in Sogn, Norway, February 8, 1828. They were married in 1852 and moved to Roseville Townshipp in 1881.

He proved up a claim and lived on farm until he died in 1886. Mrs. Hoiland died November 15, 1913.



Mr. and Mrs. Ole G. Holkesvig

Ole G. Holkesvig was born in Norway, September 21, 1866. He came with his parents to Portland in 1876. On June 1, 1889, at Portland, he married Oline Larson Hauge, who was born in Ulvik, Norway, July 19, 1869. As a farmer west of Portland, Mr. Holkesvig served on the township and school board. He served on the school board while still a pupil himself.

Their children are: Herman, George, Gustave (deceased), Lewis, Edwin and Evelyn.



Mr. and Mrs. Ole N. Heskin

Ole N. Heskin was born in Valdres, Norway, in 1856. After thirteen weeks at sea, he came to Quebec in 1866. He came to Dakota in 1874, the trip taking seven weeks with oxen and covered wagon.

Mr. Heskin married Martha Fyre (born in Norway in 1860) in Portland in 1884. She died in 1890. In 1891 he married

Eli Medslen. She was born in 1870 in Norway.

As a charter member he helped organize Bruflat Congregation. With his brother, Sven, he first bought a drug store in 1892, formerly owned by Wales, druggist, and Dr. Forbes. This they sold in 1895 to Ole Evju, who used the building as a barber shop. The two brothers operated the Heskin Brothers Store. They also had a grocery and clothing store which they sold to Wallen & Tonsing.

There are seven children: Helma, Pauline, Thea, Norval, Alpha, Oscar and Arthur.

Mr. Heskin died in 1929.



Mr. and Mrs. Gilbert Hefta

Gilbert Hefta was born at Rushford, Minnesota, May 17, 1859. His wife, Caroline Klabo Hefta, was born February 28, 1866 at Silver Lake, Iowa. They were married at Devils Lake, North Dakota in 1885.

In 1891 they came to Portland and were engaged in farming until 1912 when they moved into Portland.

They raised a family of 13 children and were active members of Aurdal Congregation.

Mr. Hefta died January 22, 1915 and Mrs. Hefta died March 2, 1944.



Mr. and Mrs. John Hallingstad

John Hallingstad was born in Vestre Toten, Norway, September 16, 1840. In

1868, at Hallingstad, Toten, Norway, he married Johanna Andrine Steprud. She was born December 21, 1839 in Toten, Norway. The Hallingstads came to the Portland community in 1880, after living several years in Wisconsin. Mr. Hallingstad was sexton of Perry Church for many years, and caretaker of Bruflat Academy, 1893-1894.

Their children are: Petra, Clara, Mina, Helga, Augusta, and Halfred. Mrs. Hallingstad died in 1894 and Mr. Hallingstad in 1922.



G. O. Holkesvig and family

Gunder O. Holkesvig was born November 9, 1834, in Ulvik, Prestegaard, Hardanger, Norway. In 1864, in Ullansvang Church, Norway, he was married to Kristi Asbjornsdatter.

The Holkesvigs came to Portland in 1876 and homesteaded in Primrose Township. They were the parents of Ole and Albert.



Mr. and Mrs. Sven Heskin

Sven N. Heskin was born in Norway, September 29, 1854. In 1868 he came with his parents to America and settled in Wisconsin.

In 1872 he came to Dakota and worked the first summer for the Hudson's Bay Co. boating on the Red River, and surveying for the government.

In 1873 he began improvements on his homestead. He married Ragnhild O. Haugen in 1874. Their nine children were: Julia, Nils, Ole, Mary, John, Henry, Anna, Carl and Helmer.

Mr. Heskins served two terms as sheriff and one as deputy. He was elected to the State Legislature in 1896 for one term. Mr. Heskin was a charter member

of Aurdal Church and devoted much time to church work. In 1907 they moved to Portland. Mr. Heskin died in 1924 and Mrs. Heskin in 1934.



Mr. and Mrs. Anders Heskin

Anders (Andrew) Heskin was born in Valdres, Norway, October 6, 1847. In 1873 he came to the Portland area. He homesteaded one mile north of Portland near the Goose River (Solberg-Heskin farm). After breaking a few acres and putting up a house for his parents, he returned to Wisconsin to bring them and his brothers to Dakota.

Andrew Heskin was a charter member of Bruflat Congregation organized in 1874. He married Marit Skogstad on January 30, 1875. He died January 30, 1893.



Mr. and Mrs. John Hoiland

John Hoiland was born at Cambridge, Wisconsin, December 27, 1857. His wife, Mary Flesche, whom he married March 10, 1896 at Portland, was born at De Forest, Wisconsin, February 21, 1860. He came to the Portland area in 1882.

He farmed for awhile in Roseville Township and later moved to Portland where he was occupied as a retail merchant in a confectionery and fruit store.

After many years here he moved to Mayville and was a coal dealer. He was a great lover of trees and planted many at his home in Portland, now owned by his daughters.

Their children are Amy and May.



Mr. and Mrs. Carl Haugom

Carl Haugom lived continuously in this city for 55 years, from 1882 until his death in September 1939. Mr. Haugom was born in Vardal, Norway, November 17, 1857.

In the spring of 1880 he emigrated to the United States.

He worked for several years in the M. J. Aikens and Son Hardware. In January 1895 Mr. Haugom and B. B. Grinley bought the Aiken's Hardware and opened the Haugom and Grinley Hardware.

In 1884 he opened his own hardware store under the name C. C. Haugom and Company.

On May 23, 1899 he was married to Lina Lien of Portland. They had three children, Myrtle, Wallace and Inez.

Mrs. Haugom was born in Gudbrandsdalen, Norway, September 22, 1871. She and her younger sister emigrated to the U. S. in the fall of 1889 and came to Northwood, North Dakota to make their home. She came to Portland in 1897 and continued to make her home here until her death January 2, 1938.



Mr. and Mrs. John Hovland

John Hovland was born April 10, 1868 near Stavanger, Norway. His wife whom he married January 29, 1897 at Hillsboro was Johanna Marie Sether, born March 8, 1873 near Aalesund, Norway.

He came to Portland in 1897 and became a farmer.

In October 1938 he retired from farming and bought his present home at Portland.

Mrs. Hovland died in 1956.



Nels G. Hogfoss

Nels G. Hogfoss was born in Norway December 3, 1877. He came to Portland with his parents, Gullbrand and Petra, and his three brothers in 1886. His father died in 1888. Nels, his mother, and brothers were employed on farms, and also farmed near Portland and Sherbrooke. From 1901 until 1914 they lived in Primrose Township. In 1914 his mother and he came to Portland and he operated a blacksmith shop until 1933, except for two years in Sharon in similar work. Nels continues to live in Portland.



Mr. and Mrs. Andreas Hagen

Andreas Hagen was born in Valdres, Norway, May 25, 1847.

His wife, Ingeborg Bergene Hagen, was also born in Valdres, Norway, October 14, 1857.

They were married in Mower County, Minnesota in April 1882 and came to Portland that spring. They farmed where their daughter and son-in-law, Bernt Gullickson, now live.



Mr. and Mrs. Peder Hagen

Peder Hagen was born in Norway, February 2, 1846. He came to Dakota Territory in 1876. In 1878 in Portland he was married to Mari Skadeland, who was born in Norway, September 21, 1845.

They homesteaded on a farm west of Portland which is now the home of Alton Hovde. In 1887 they moved to live with his father, Peder Pederson Hagen, and his mother, Gellog Hagen, on the farm now owned and operated by their son, Peder P. To this union six children were born: Gelina, Aase, Hilda, Halvor, Peder and Ida.

Mr. Hagen died in 1894 and his wife in 1913. (The older Peder Pederson Hagen died in 1893 and his wife, Gellog, in 1899).



Mr. and Mrs. Paul Grinde

Paul Grinde was born in Aasen, Norway, June 24, 1857. He came to America in 1879. Mr. Grinde came to Traill County in 1888, and bought a farm near Portland. His wife Julia Sando was born October 20, 1876. They had one son Bertram who lives on the home farm.

Mr. Grinde died November 20, 1939 and his wife August 20, 1911.



Mr. and Mrs. Justin Grinde

Justin Grinde was born in Aasen, Norway, January 8, 1855. He came to America in 1880 and came to Portland in 1889, where he farmed in Roseville Township. His wife, Anne Johnson, was born in Stjordalen, Norway, July 14, 1861.

They had eight children: Bergitte (deceased), Benjamin (deceased), John, Simon, Anna, Nora, Josie, and Olga.

Mr. Grinde died February 27, 1922 and Mrs. Grinde, June 11, 1946.

Mr. and Mrs. Sever Froslid

Sever Froslid, an early pioneer of Primrose Township, was a charter member of Bang Congregation. He was born in 1851 and died in 1914. His wife was Ragnhild Bothun, born in 1858, and died in 1939.

Mr. and Mrs. Halfdon Foss

Halfdon Foss was born in Vikersrud, Norway, October 18, 1854. In 1881, he married Marie Rydgren. She was born in Nedre, Norway, December 29, 1862.

The Fosses came to Portland in 1887. For 13 years Mr. Foss had a General Merchandise store. In the fall of 1904 they moved to Hatten where he later organized the Foss Clothing Co. which he managed until a few years before his retirement. He died August 2, 1932.



Mr. and Mrs. John O. Gubberud

John Gubberud was born January 6, 1845 in Modum, Norway. His wife, Mari Nilson Hjeremunrud, was born July 8, 1854, in Snarum, Norway. They were married December 12, 1876. With their two children, Ole and Marie, they first came to Wisconsin. In the spring, 1882, they came to Traill County, settling on a farm six miles northwest of Portland.

They had eight children: Ole, Marie, Christian, Jorgen, Gina, Jennie, Albert, and Christine.

Mr. Gubberud died January 9, 1929 and his wife, July 11, 1936.

Mr. and Mrs. G. R. Grandalen

Gunder Reiersen Grandalen, first owner of the present Grandalen farm, was born in Eggedal, Norway, in 1818. He married Ingeborg Jacobson. They came to Portland in 1878.

The Grandalens had six children: Kristi, Guri, Jaarand, Ole, Jacob Flaten Grandalen, and Reier Tofsrud Grandalen. Mrs. Grandalen died in 1890, and Mr. Grandalen in 1903.

Mr. and Mrs. Andrew Gilbertson

Andrew Gilbertson was born in Valdres, Norway, June 27, 1851. In Grand Meadow, Minnesota, in 1879, he married Sara Wold Erickson. She was born in Valdres, April 26, 1848. They came to Portland in 1881 and farmed west of town. They were the parents of Mrs. Clara Davidson, Anna, and Andrew Gilbertson, Edward and Erick Erickson, all deceased.

Anton Gilbertson

Anton Gilbertson was born in Valdres, Norway, November 1, 1856. He came to the Portland area in 1879. Like his brother, Andrew, he farmed west of town.

Mr. and Mrs. Henry Gilbertson

Henry Gilbertson was born in Valdres, Norway, July 13, 1854. He came to Portland in 1878. In 1882 he married Oline Wold, who was born in Valdres, June 30, 1860. Mr. Gilbertson hauled his first grain to Fargo from west of Portland. He held various township offices. There were ten children: Cust, Emil, Albert, Theodore, Halfdan, Oliver, Joseph, Ida, and Nellie and Clara (deceased).

Mr. and Mrs. Andrew Fugleberg

Andrew Fugleberg was born in Ossian, Winneshiek County, Iowa, on April 22, 1875. In 1879 he came with his father to Belmont, near Hillsboro, where they lived five years before coming to Portland in 1884. A farmer, he married Betsy Groven in Hillsboro, February 1896. The Fuglebergs had two daughters: Claudine and Selma.

Mr. and Mrs. John G. Finell

John Finell was born in Hova, Sweden, October 17, 1870. His wife, Agnetta Mickelson, was born near Hedemarken, Norway, June 28, 1876. They were married in Hillsboro, November 4, 1897, and moved to Portland in 1904. Mr. Finell died in May, 1943, and Mrs. Finell, February, 1947.

Mr. and Mrs. John Grinde

John Grinde was born in Aasen, Norway, March 3, 1853. He came to America in 1879. In 1887 he came to North Dakota and farmed near Portland until 1926.

His wife, Sofie Christina Wibsted, was born in Trondhjem, Norway, January 14, 1852. They were married in 1880.

They had eight children: Jennie and Oscar (deceased), Bernard, Severin, Alfred, Joseph, Emma, and Jennie.

Mr. Grinde died January 29, 1930 and Mrs. Grinde December 27, 1942.

Mr. and Mrs. Gullick Gullickson

Gullick Gullickson was born in Valdres, Norway in 1850. In 1883 he married Anna Brend. She was born in Valdres, Norway in 1860. He purchased land in Primrose Township, and farmed until his death in 1900. He built many of the homes in the community, as well as the first school houses in the township in 1886.

Mrs. Gullickson continued farming with her children until her death in 1928. Their children are: Edward, Julius, Alfred, Bernat, and Clarence; dead are Ole, Inger Berg, and Mabel.



Mr. and Mrs. G. (Peterson) Fyre

Guttorm Fyre was born in Valdres, Norway, May 3, 1824. In 1853 he married Thonetta Maria Olson. They came to America in 1877, and in 1878 to Portland. In Roseville township they homesteaded on land now owned by Alfred Fyre, a grandson.

There were five children: Peder, Gunhild, Mathia, Olliane, and Gilbert. Mrs. Fyre died December 15, 1893, and Mr. Fyre, August 7, 1907.



Mr. and Mrs. Ole Grandalen and family

Ole Grandalen was born December 9, 1855 in Eggedal, Norway. In 1872 he came to Decorah, Iowa and to Portland in 1878. He married Ingeborg Olson Lovely in 1879. Both were early and continuous members of the Aurdal Congregation.

They had a family of twelve children. Living are George, Olaus, Reter, Bennie, Gilbert and Ida.

Mrs. Grandalen died in 1892 and Mr. Grandalen in 1941.



Mr. and Mrs. Christian Monson and family

Christian Monson was born in Sogn, Norway. In 1858, in Moscow, Wisconsin, he was married to Carrie Rognels Sjerson. She was born November 24, 1841, in Norway. In 1879, they came to Portland and farmed. There were ten children. Mr. Monson died January 14, 1905, and Mrs. Monson, April 1, 1926.



Mr. and Mrs. John E. Fladeland

John E. Fladeland was born in Minnesota in 1861. He was the son of an attorney. His mother was the daughter of a confederate army officer. His first wife, A. Louise, passed away in 1900. His second wife, A. Marie Holm passed away in 1936. Mr. Fladeland passed away in 1940. Mr. Fladeland came to Portland in 1892 and purchased the Forbes and Soldahl Drug Store. A charter member of the State Pharmaceutical Society, he owned drug stores at Sutton, Luverne and Bottineau. The children are: Fay, Earl, May, Eva and Robert.



Mr. and Mrs. Daniel Fore

Daniel Fore was born in Norway. In 1882 he was united in marriage to Gertrude Anderson by Rev. Harstad in the Cran parsonage. She was born December 8, 1857. She came to Dakota Territory in 1878 with C. M. Monson, and daughter, Anna, in a covered wagon. In 1879 she filed claim south of Portland.

The Fores had six children: Arthur, Nellie, Christella, Freddie, Cora, and Edward.



Mr. and Mrs. T. O. Flaten

Tollef Flaten was born in Norway, July 18, 1824. He married Ingeborg Anderson, born July 2, 1845. They had one son, Carl, who was born in 1872 and died in 1908. Carl married Guri Medalen in March 21, 1891. They had two children, Ida (deceased) and Otto, now living in Portland with whom Mrs. Flaten lives.

Tollef Flaten died in March, 1899, and his wife February 1901.



Mr. and Mrs. Gilbert Fyre

Gilbert Fyre was born in Valdres, Norway, April 10, 1870. With his parents, brothers, and sisters he came to Kerkhoven, in 1877 and to Portland in 1878 where he settled in Roseville Township. In 1899 he married Lottie Larson who was born in Stavanger, Norway, Decem-

ber 19, 1875 and came to the United States in 1894.

There are seven children: Agnes, Maria, George, Alfred, Garfield, Selma, and Edmer.

Mr. and Mrs. John Eng

John Eng was born January 11, 1866, in Hamar, Norway. He came to America at the age of seventeen and worked in Wisconsin before his marriage January 9, 1895 to Evelina Larson.

The couple moved to Portland and Mr. Eng operated shoe shops here and in Mohall until 1914, when he moved to Mayville.

Mrs. Eng died in 1937 and Mr. Eng in 1950. Their children were: Agnes, Carrie, Ellen and Henry, (deceased).

Mr. and Mrs. Hans P. Engh

Hans P. Engh came to Portland from Northwood, Iowa, in 1893, immediately after marrying Elizabeth Rustad there. Mr. Engh was a grain buyer in Portland and Roseville until his death in 1909. They had four children: Pearl, Mildred, Thelma (deceased), Leroy (deceased).

Mr. and Mrs. Andrew Erstad

Andrew Erstad, a charter member of Bang Church, was born in Valdres, Norway, November 19, 1856. He came to America in 1881, and to Dakota Territory in 1888, settling near Finley. In 1900 he married Elsie Stenseth. She was born in Aadalen, Norway. The Erstads had one daughter, Mabel, and a foster daughter, Clara. Mr. Erstad died in 1941.

Mr. and Mrs. Peder Evenson

Peder Evenson was born in Toten, Norway, on March 31, 1831. His wife, Berthe Helena, was born in 1838 in Toten.

They came to Wisconsin in 1873, moving to Portland in the spring of 1881.

They filed on a homestead in Primrose Township, where they resided until their deaths.

They were the parents of the following children: Oline, Karen Beata, Petra, Ole, Edward and Augusta.

Mr. Evenson was a charter member of the Perry Lutheran Church, and Mrs. Evenson of the Perry Ladies Aid.

He died April 19, 1904 and his wife May 15, 1909.

Mr. and Mrs. George Enge

George Enge was born in Stavanger, Norway, October 19, 1858. In 1885, at Walcott, he married Randi Erickson, who was born in Holland, Norway, April 26, 1864. They came to Portland in 1889. Mr. Enge farmed and managed a hotel and grain elevator. They had a family of nine boys and two girls: Walter, Rudolph, Joseph, Leonard, Victor, Theodore, Nels, Ernest, Merritt, Ruth, Alpha.



Mr. and Mrs. Erick A. Erickson

Erick A. Erickson was born at Grand Meadow, Minnesota, December 21, 1876. In 1881 he came with his parents to the Portland area.

In 1903 he married Oline Kjos in the Bang Church. She was born in Ring, Norway. In 1905 he purchased the farm on which he lived until his death in 1934. Mrs. Erickson died in 1927.

Mr. Erickson served as County Treasurer of Steele County and was Secretary-Treasurer of Steele County Mutual Fire Insurance Company for thirty years.

They had eight children: Selma (deceased), Arthur, Edith, Lenore, Robert, William, Norma, and Frieda.

Mr. and Mrs. John J. Johnson

John J. Johnson was born in Norway in 1855. He came to this area about 1883. He married Olafina Peterson at Caledonia in 1889. She was born in Dane County, Wisconsin in 1868. Mr. Johnson died in 1907 and Mrs. Johnson in 1955. They operated a hotel in Portland for a time. Their son, Eddie W. Johnson lives in Mayville.



Mr. and Mrs. B. B. Grinley

Bendeck B. Grinley was born in Fresvik, Sogn, Norway, December 11, 1868.

At the age of two he came with his parents to Dane County, Wisconsin.

In 1886 he arrived at Portland. In 1895 he formed a partnership with Carl Haugom thus establishing the Haugom-Grinley Hardware which continued till Mr. Haugom's death in 1939. Mr. Grinley retired from that business that same year.

On June 6, 1896 Mr. Grinley was united in marriage with Oline Skarperud of Mayville Township. She died November 23, 1904. Three children were born to them: Burton, Lena, and Lillian. On August 23, 1906 he married Andrine Skarperud. To this union were born six children: Andrew, Wilma, Erling, Helen, Anna, and James.

Mr. Grinley died November 13, 1953.

Mr. and Mrs. O. S. Wallen

O. S. Wallen came here in the spring of 1879 from Wisconsin. He was a classmate of Bob and Mrs. LaFollette at the University of Wisconsin.

He worked in Chautland Bros. Store, where the first Post Office was installed, in Old Mayville.

This building later was moved and remodeled and became the first Fladeland residence.

Mr. Wallen was a delegate to the Constitutional Convention, that drafted the Constitution for the newly formed state of North Dakota and subsequently served six terms in the newly formed Legislature.

Mrs. Wallen, the former Ellen L.

Thompson, came here in the fall of 1879, and taught the first term of school in the newly built school house on the "North Prairie", later known as the Moen School. They were married in the spring of 1880 in a double-wedding ceremony with the K. S. Groths, and settled on a homestead in Roseville Township.



Mr. and Mrs. Ole G. Evju

Ole G. Evju was born in Telemarken, Norway, January 18, 1864. At the age of five years, with his parents, he came to America.

In March 1889 he was married to Betsy Johnson at Belgrade, Minnesota. To this union four children were born: Gustav, Carl, Nordahl, and Beatrice, all deceased. His wife preceded him in death dying in 1915.

Mr. Evju lived in Portland the last 53 years of his life, operating a barber shop.

He died March 11, 1940 at the age of 76 years.



Mr. and Mrs. Thomas Evanson

Thomas Evanson was born in 1855 in Norway. Coming to America about 1878,

he married Oline Evenson in Wisconsin. She was born in Norway in 1861.

In 1879 Mr. and Mrs. Evanson settled in Primrose Township, Steele County, and continued to live there until their death. Mr. Evenson was township assessor for many years.

The Evansons had a family of thirteen children. Mr. Evanson died in 1935, and his wife in 1942.



Mr. and Mrs. Even I. Evanson

Even I. Evanson was born in Norway, June 3, 1846. In 1869 he came to the United States. In 1877 Mr. Evanson came to Dakota. In 1878 he filed on government land, and sent for his parents and brothers and sisters.

In 1878 he married Anna C. Jordet. The children are: Clara, Carl C., Carl M., J. Melvin, Ella C., Olga A., and Jacob A. He moved to Stanwood, Washington in 1900, and passed away in 1902. In 1903 the family moved back to North Dakota. Mrs. Evenson died in 1929. He served for a number of years as county commissioner from his district. He was a charter member and first Secretary-Treasurer of the Farmers Mutual Fire and Lightning Insurance Company of Traill County.



Mr. and Mrs. Karl Egge

Karl Egge was born in 1872, in Ors-

kog, Avlesund, Norway. He came first to Hillsboro and then to Portland in 1892. In 1896 he married Anna Soholt, from Orskog, who was born in 1882.

Mr. Egge was a blacksmith. The Egges lived in Portland until 1921, when they moved to Mayville, where he continued in business until a short time before his death in April, 1957.

The Egges had seven children: Olga, Oscar, Boyer, Ruth (deceased), Kris, Arthur, and Lydia.



Mr. and Mrs. E. A. Erickson

Edward A. Erickson was born March 6, 1878, in Grand Meadow, Minnesota, and came to Portland in 1881. He married Olive Johnson, who was born in Valdres, Norway. They farmed about twelve miles west of Portland. They spent their last years in Silverton, Oregon, where Edward died in 1952.



Mr. and Mrs. Fingal Enger

Fingal Enger was born February 22, in Ringrike, Aadalen, Norway. When he was 23 years old he came to America. In the summer of 1871 he worked his way to Fargo. In March, Fingal Enger, Iver Fecher and John Amb set out on foot for what is now Steele and Traill

counties. The three borrowed oxen to go to Fargo for supplies, then set to work to build log cabins. It is told that Enger received double pay for doing the work of two men.

In 1875, he married Hjertrud Nyhus Nilson, a widow with two children.

Fingal Enger was the first white man to settle in what is now Steele County. Enger township is named in his honor.

Mr. Enger died August 27, 1913.



Mr. and Mrs. John T. Eide

John T. Eide was born in Eide, Hardanger, Norway, March 10, 1857. His wife, Lena Pauline Paulson, was born at Hedemarken, Norway, May 24, 1862.

Mr. Eide came to Portland in 1879 and filed his claim west of Portland. He married Lena Paulson at Fargo, February 6, 1883.

In 1884 they helped organize Perry Congregation and build the church.

There are nine children: Theodore, Reinhart, and Cornelius (all deceased), and Annie, Emma, Olga, Selma, Elmer and Oscar.

Mr. Eide died in 1918, and his wife in 1939.



Mr. and Mrs. Henry Domier

Henry Domier was born in Germany, September 29, 1832. When he was 17 years old he went to Christiania, Norway. He married Kari Ronning, who

was born in Christiania, September 15, 1829. They emigrated to America and reached the Portland area in 1872. Their children were William, Louisa, John, Olaf, Ludwig, August, and Oscar, who still lives on the home farm. Mr. Domier died April 24, 1902, and his wife August 5, 1911.



Mr. and Mrs. Hans K. Jensen

Hans K. Jensen was born in Norway October 4, 1860 and died June 17, 1950. His wife, the former Karoline Hanson, was born December 7, 1861 in Norway and died October 17, 1939. They came to Portland in 1888. Mr. Jensen was a steam engineer, painter, owner of ice, wood and feed business, city council man, city police and light plant engineer. He is chiefly remembered in the area for his steam threshing machine — he did custom threshing each fall for years and years.



Mr. and Mrs. G. K. Jordet

Gilbert K. Jordet was born March 21, 1863, near Drammen, Norway. He came to the United States in 1869 with his

parents, Knute and Ranghild Jordet. In 1878, with his brother Ole K., he came to Dakota Territory. That year he hauled grain to the Red River for the Grandins and for the Gummers in 1879. The winter of 1880-81 he moved with his brother and sister to the western part of Steele County. In 1885 he purchased one hundred sixty acres of land which he eventually increased to 7,000 acres. He hauled enough grain to Portland in one day to fill two box cars, using four horse teams and up to twenty wagons or sleds. In January 1898 he married Isabel Saalsa of Argyle, Wisconsin. They moved to Rocky Ford, Colorado in 1945, where Mr. Jordet passed away on December 31, 1945. The children were: Cora, Norma, Gilda, Joseph, Orville and Willard. Gilda was lost in a ship collision in the English Channel in 1953.

William Darch

William Darch, a pioneer of Primrose Township and its first school clerk, came from New York State in 1880, settling in Moorhead. In 1882 he came to Steele County.

Mr. and Mrs. John Domier

John Domier was born in Oslo, Norway December 4, 1861. He came to America with his father when five years old. In 1888 he married Tonette Engen who died the following year. One child, Clara was born to this union. In 1890 he married Bertha Anderson, who was born in Sweden, July 16, 1864. Mrs. Domier died June 8, 1912. Mr. Domier died May 14, 1936. The children, besides Clara, were: Carl, Alfred, Mary, Helmer, Oscar, Olga, Melvin and Joseph.

Mr. and Mrs. Oscar Domier

Oscar Domier was born November 16, 1880, at Zumbrota, Minnesota. He married Inga Pladson, born April 7, 1885. Their children are: Selma, Alvin, Selmer, Willie, George, Inez, Esther, Leroy, Gladys, Norman and Delores.

Mr. and Mrs. William Domier

William Domier was born January 23, 1859 in Norway and came to the United States in 1866.

In 1881 the family came to Dakota Territory. William farmed near Portland

and Clifford, except for eleven years when he farmed near Michigan, North Dakota.

In 1905 he moved to Clifford and became manager for the Goose River Implement Co., holding that office until 1918. He married Josephine Kville in 1881. She passed away November 29, 1911. In 1918 he married Clara Sveum of Clifford. He passed away April 8, 1934. The children are Melvin and Alice.

Mr. and Mrs. Gilbert Chilsted

Gilbert Chilsted was born August 5, 1851, in Oslo, Norway. He immigrated to Iowa in 1877 and in 1881 married Gertha Dokken. In 1898 they moved to Portland. Mr. Chilsted was employed by the Great Northern railroad.

Mrs. Chilsted died in 1918, and Mr. Chilsted in 1940. Their children were: Clara, Lillian, Ida, Hannah, Arthur, Vivian, and Carl.



Mr. and Mrs. C. A. Bergene

Christian A. Bergene was born in Valdres, Norway, March 2, 1860. Emigrating to America in 1879, he came first to Wisconsin. In 1882 he came to the Mayville-Portland area. In 1886 he married Anne Monson. She was born in Etnedal, Norway, November 26, 1862.

Mr. Bergene began to farm in Primrose Township in 1884, and continued until his retirement in 1923. For many years he and his wife maintained a home in Mayville and Portland to further the education of their children. He served as trustee and deacon of Perry congregation and on the township board.

They had twelve children: Albert, Mabel, Alma (deceased), Clara, Emma, Amelia, Clarence (deceased), Theodore, Hartvick, Mildred, and two died in infancy.

Mrs. Bergene died in 1925, and Mr. Bergene in 1952.



Mr. and Mrs. Halfred Bjerke

Halfred Bjerke was born in Vestre Toten, Norway, September 11, 1866. In 1885 he came to the Portland community, and in 1891 he married Petra Evenson. She was born September 19, 1870, in Wisconsin.

Mr. Bjerke farmed in Edendale Township, Steele County, until he retired in 1926, and moved to Portland. He was a school director for twenty years in Edendale Township.

There were eleven children: Hilma, Agnes, Helmer, Melvin, Judith, Clara, Selma, Doris, and three infants who died. Mrs. Bjerke died in 1914.

Mr. Bjerke married Mrs. Golla Hallingstad in 1923. She died in 1944. Mr. Bjerke died in 1945.



Mr. and Mrs. Knut O. Braaten

Knut O. Braaten was born in Valdres, Norway, January 24, 1865. He came to America in June 1884. In 1887 he proved a quarter of land in Minnesota.

He was united in marriage to Annie Goplerud, November 13, 1888. Annie Goplerud was born in Wisconsin, November 26, 1868. She was the daughter of Kari Goplerud, who homesteaded west of Portland, April 1879.

In 1892 he sold his land in Minnesota and later bought Kari Goplerud's farm west of Portland. There he lived until April 1944 when he moved to Portland and in September 1945 he moved to Fargo.

Surviving members of their family are: George, Clara, Agnes, Hilda, Arthur and Orlo.

Mrs. Braaten died January 1, 1935.



Mr. and Mrs. Adolph S. Carlson

Adolph S. Carlson was born in Kopervik, Norway, December 9, 1869. He was a resident of Portland for 62 years, until his death in 1950.

In July 1897, he married Elizabeth Torbjorson, who died in 1900. They had one daughter, Anna. In 1903 he married Gertrude Braaten who was born in Norway, March 31, 1866. Their children are Alfred, Inga, and Arthur. Mr. Carlson was a painter and decorator for 50 years in the Portland area, coming here in 1888.

Mrs. Carlson, 91 years old, makes her home with her daughter, Inga, in Fargo.



The William Brainerd family

William Brainerd was born in 1846 in Wittenberg, Germany. In 1871, in Wisconsin, he was married to Agneta Heskin, born in Valdres, Norway in 1844; she came with sisters to Quebec in 1868. The Brainerds came to Dakota Territory

in 1881 and lived with relatives. Their first home, ten miles out of Portland, was a dugout, where they lived for eight years.



Mr. and Mrs. Ole C. Bakken

Ole Christenson Bakken (1822-1908) was born in Sogn, Norway. With his wife, Guri Kvalen (1826-1899) and four children he left Bergen, Norway for Wisconsin in 1864. In March 1876 their oldest son, Christen, and Colbjorn Livedalen made a trip to the Goose River Valley to locate suitable land. In May the same year the family came and homesteaded in Vikink Township.

Their children were: Christan, Anna (mother of Mrs. Gilbert Moen), Nels, Gjertrude, Syver and Martin. Nels died in Canada in 1955 at the age of 94.



Mr. and Mrs. Sever Brovold

Sever Brovold was born in Gudbrandsdalen, Norway, August 2, 1879. When he was four years old he came to Ameri-

ca. The family settled near Hillsboro.

In Sherbrooke, February 19, 1909, he married Hilda Rindy. They spent their entire married life in Portland, where he was manager of the Farmers and Great Western Elevators for a number of years.

Mr. Brovold died in 1946 and his wife in 1956.

Their children are: Margaret, Lorraine, Spencer, Ernest, Marlin, Abner, Ralph, Everett, Philip, and Orville.



Mr. and Mrs. Milson Brumwell

Milson Brumwell was born in Canada in 1869. In 1898 he married Lizzie Sparrow. He taught in Portland in 1897 and 1898. He is now living in Erskine, Minnesota. They had five daughters and one son, including Mrs. Orville Skarperud.



Mr. and Mrs. John Brenden

John Brenden was born in Gudbrandsdalen, Norway, 1877, and came to Portland in 1896. In 1902 he married Gunhild Heskin and lived on the homestead until 1906. They then bought a farm northwest of Portland. Their children are: Ida, Agnes, and Helmer.

Mrs. Brenden died in 1924, and Mr. Brenden in 1941.



Mr. and Mrs. Ole O. Berg

Ole O. Berg was born in 1845 in Norway. He emigrated to America in 1869. In 1871 his wife, Marit Haugen, born in 1841 in Valdres, Norway, emigrated to America with her son Nels and lived in Iowa for five years. In 1878 they came to Dakota Territory. They homesteaded a few miles northwest of Portland.

Mrs. Berg died in 1927 and Mr. Berg in 1923.

They were the parents of Nels O. N. Berg, Ole O. N. Berg and Mrs. Peter Haugen (all deceased), and Ingvald Berg.



Mr. and Mrs. Ole O. N. Berg

Ole O. N. Berg was born in 1872 in Clayton County, Iowa. At the age of five he came to Dakota Territory, settling at Portland. He was married to Inger Fauske in 1899. Mrs. Berg immigrated to America from Valdres, Norway in 1893.

Mr. Berg served as Treasurer for Viking Township for a period of over thirty years. They were the parents of four children: Melvin, Joseph, Otelia and Genora (deceased).

Mrs. Berg died in September 1936. Mr. Berg died in November 1955.



Mr. and Mrs. Knudt Brunsdale

Knudt Brunsdale came to Dakota Territory in 1882 and engaged in farming and real estate. He married Margaret Nordgaard in 1888. A pioneer in banking, he was president of the State Bank of Portland, and of Finley, and vice-president of the Goose River Bank at Mayville. He was county treasurer, Steele County, for three terms and a member of the Board of Trustees, Mayville Normal School.

Five children living are: G. E., Norman, Kristian E., Karl E., and Anna.



Mr. and Mrs. Syver Anderson

Syver Anderson was born in Kongsvinger, Norway, June 24, 1844. He came to America (Iowa) in 1868.

His wife, Kirsti, was born on September 22, 1848 in Wermeland, Sweden. She came to Quandahl, Iowa, in 1869.

They were married in Iowa on January 6, 1872. Nine children were born to them, five of whom are deceased. The living are Alfred, Ida, Mathilda, and Mrs. Clara Overby.

They came to the Portland area in 1879 and homesteaded the present farm in Roseville Township.

Mr. and Mrs. Carl Amb

Carl Amb was born January 1, 1861, in Ringsaker, Norway. At Portland, in 1886, he married Caroline Renden, who was born January 2, 1864, in Osterdalen, Valdres, Norway.

He came to Portland in 1878, and farmed in Roseville Township.

There were twelve children: Clara, Michael, Milla, Sophia, Conrad, Martha, John, Louise, Albert, Emma, Theodore, Joseph.



Mr. and Mrs. Thomas H. Arnold

Thomas H. Arnold was born September 29, 1872, son of Alvin and Helen Arnold. In February 7, 1897, he married Hannah Brovold, who was born January 12, 1877, in Hardanger, Norway. Their children are Arlina, Gladys, Frances, Mattie, and Grace.

Mr. Arnold farmed for a few years. Then from 1903 until 1912 he owned and operated a meat market. He moved to Mayville, where he owned several different businesses; cafe, recreation parlor and hotel.

Mrs. Arnold died April 13, 1913, and Mr. Arnold, January 3, 1948.

Mr. and Mrs. A. J. Anderson

Andrew J. Anderson came here in 1881 from Northwood, Iowa. On June 26, 1890 he was married to Randine Rustad, who was born May 11, 1856.

Mr. Anderson operated a furniture store in Portland until his death, May 25, 1933. Mrs. Anderson died March 30, 1936.

The Andersons had the following family: Alma, Andrine, Josie, Loretta, John, Conrad, Anton, and Reuben.

Mr. and Mrs. C. O. Brager

Christopher O. Brager was born in Valdres, Norway, March 7, 1853. He came to Portland in 1883, and bought a farm six miles west of town. He married Christine Thompson. He farmed until 1909 and then operated an elevator until 1919. Mrs. Brager died June 24, 1927, and Mr. Brager died in Silverton, Oregon.

They had six children, three of whom died in 1890 in the diphtheria epidemic. Cora and Clarissa passed away later, and William survives.

Mr. and Mrs. Olaf Brenden

Olaf Brenden was born in Gudbrandsdalen, Norway in 1886. He came to Portland in 1906. In 1906 he married Ingrid Heskin who was born in Wisconsin in 1868, and came by covered wagon to Dakota with her parents in 1874.

The Brendens farmed until 1944, when they moved to Portland. Mr. Brenden died in 1953 and his wife in 1957.

Mr. and Mrs. Knudt Arneson

Knudt Arneson was born in Etnedalen, Norway, May 20, 1857. He came to Portland from Northwood, Iowa in 1877. In May 1881, he married Inger Espeseth, who was born in Etnedalen, Norway, November 1855. Children were Anna, Arne and Albert.



Mr. and Mrs. Nels O. N. Berg

Nels O. N. Berg was born in 1867 in Valdres, Norway. At the age of four years, Nels, together with his mother, emigrated to America. His father had come earlier. At the age of ten he came to Dakota Territory. He was married to Andrine Haugen. Mr. Berg attended Brulat Academy and Augsburg College. He taught parochial school for approximate-

ly 40 years. Mrs. Berg died in 1943. Mr. Berg died in 1947. They were the parents of eight children: Mrs. Marie Paulson (deceased), Mrs. Judith Berg, Mrs. Malfred Lowder, Mrs. Agnes Paulson, Mrs. Cornelia Abelian, Mrs. Hilda Paulson, Oliver Berg and Rolf Berg.

Mr. and Mrs. Andrew Brovold

Andrew Brovold was born in May, 1842, in Kinsevik, Norway. For twenty years he was a seaman, captain, and ship owner.

His wife and children joined him here from Norway in 1886. He started a cafe which he operated for eleven years.

In 1897 the ymoved to a farm near Gully, Minnesota. Their children were Anna, Gerti, Hannah, Jacob, and Agnes, all deceased. Mrs. Brovold died at the age of 87 years, and Mr. Brovold, at the age of 94.

Mr. and Mrs. Anton Brend

Anton Brend was born in Valdres, Norway, May 18, 1867. He came to America in 1882, with his parents. He married Helga Hallingstad in 1894.

Mr. and Mrs. Brend farmed in Primrose Township. They had seven children: Joseph, Alf, Selmer, Albert, Helen, Eva, and Mildred. Mrs. Brend died in 1934 and Mr. Brend in 1941.

Mr. and Mrs. Syver Brend

Syver Brend was born in Valdres, Norway. He came to America in 1880 with two sisters, first to Ada, Minnesota and then to Portland in 1884.

In 1895 he married Certie Brovold. In 1896 Mr. Brend and Gullick Gullickson built the four first schoolhouses in Primrose Township. The Brends farmed in that township many years before moving east of Mayville.

Mr. Brend died in 1932 and his wife in 1951.

Mr. and Mrs. Brend had nine children; surviving are: Arthur, Alma, Ida, Anna, Inga, Norman, and Ralph.

Mr. and Mrs. Ole Brend

Ole Brend was born in Valdres, Norway. He came to America in 1882, and two years later to Portland with his parents and brother, Anton. In 1897 he married Mina Hallingstad who came from

Wisconsin in 188. They farmed for many years in Primrose Township where Mrs. Brend died. Mr. Brend was treasurer of Perry congregation and trustee. The family moved to Cummings to farm and then to Grand Forks. There were nine children: Alvin, Edwin, Walter, Henry, Oswald, Agnes, Ella, Julia, and Lawrence.



Mr. and Mrs. Jeremias Arneson

Jeremias Arneson was born in Valdres, Norway in 1825. He married Gunhild Heskia, also born in Valdres in 1836.

They came to the Portland area in June 1874 and homesteaded on the farm where they lived until his death in 1918. This farm is now owned by Martin Karlstad.

Mrs. Arneson died in 1920.



Mr. and Mrs. A. O. Anderson

Andrew O. Anderson was born January 17, 1868, near Dodgeville, Wisconsin. In the spring of 1892 he came to Dakota Territory, settling on a homestead west of Portland. He attended Brufat Academy. In 1902, at Grand Forks, he married Elise Helgeland. She was born December 11, 1879 in Norman County, Minnesota.

He operated a country store a few years and in 1902 entered into the partnership with Anderson Brothers and Company in Portland. In 1910 he bought an interest in the W. Torgerson Company. He retired in 1956. He was active in many civic organizations. He was a

member of Broflat Lutheran Church and held a number of offices in the Church.

Mr. and Mrs. Anderson died in 1957. One son, Clarence, preceded them in death and a daughter, Alice, survives.



Mr. and Mrs. Nels N. Amundson

Nels Amundson was born in Wisconsin. He came to the Portland area in the summer of 1877. June 14, 1881 he married Oline Ellingson, who was born in Norway, October 2, 1869. Being too young to file a claim he procured squatters rights. Their children are: Nickoli, Albert, Clara, Alvin, Oscar, Sander, Emma, Mabel and Ida.



Mr. and Mrs. Alvin L. Arnold

Alvin Lewis Arnold was born July 10, 1833 in Chittenango, New York. He was the son of Chauncey G. and Charlotte Huntley Arnold. His ancestors came from England in 1635, and according to the English College of Arms, the Arnolds trace their ancestry back to royalty.

Helen Peck was born June 15, 1843 in Ledyard, New York. She was the daughter of Dr. and Mrs. Thomas Peck whose ancestors came to America in 1638.

Alvin and Helen were married in Morocco, Indiana. Here they had five children, three of whom grew to adulthood: Edgar, Hattie and May. Mr. Arnold served in the Civil War, being discharged as a corporal. In 1868 he convinced his wife they should go west and seek free land. They settler near Yankton, D. T. where Arlina was born March 5, 1869.

They came to the Goose River Valley and established their claim July 4, 1871, but found that they had to buy part of their land from the railroad, but recovered the purchase price after platting the city of Portland and selling lots.

Here three more children were added to the family: Thomas H., September 29, 1872; Charlotte Helen, February 5, 1878; Orissa Rosena, December 6, 1882.

Alvin Arnold died April 6, 1891 and Helen Arnold died May 19, 1921.



**Mr. and Mrs. Edgar Arnold
and family**

Edgar married Carrie Guttenberg who was born in Sondre, Aurdal in Valdres, Norway. Their children were: Helen Elizabeth, who died in infancy; Perry; Helen Louise who died young; Anna, Edna, Alvin and Emma. They lived in Independence, La. for a few years. They celebrated their 50th Wedding Anniversary at Aurdal Church in 1933. Edgar died in 1941 and Mrs. Arnold in 1935.

May L. Arnold married John C. Nel-

son, a musician farmer and banker, in 1882. Their children were: Joseph, Henry, Earl, John, Theodore and Mable.

Hattie Alzina Arnold married Charles F. Gould at Mayville in October 1882. He was an engineer, carpenter and painter. Their children were: Willard, Sarah, Charles, Ellen, Chauncey, Harriet, Alva, and Henrietta.

Arlina E. Arnold married Fred Arnold at Portland on May 18, 1885. Their children were: Grace, Alice, Hattie, Edwin, Winne. They moved to Louisiana.

Charlotte Helen Arnold married Charles H. Benton at Fargo, April 15, 1897. His great uncle Thomas Hart Benton was the first United States Senator to serve 33 years, and was from "Benton" County, Missouri. In July 1953 Charlotte was awarded membership in the International Mark Twain Society with her name in World Who's Who because of her book, "White Fire." Charlotte is also an ordained minister. Their children are John, Arnold and Desma Orissa. She lives in Birmingham, Alabama.

Orissa Arnold married Nicholas Hirt, a farmer in 1897 at Hudson, Wisconsin. Nicholas Hirt was one of the men who helped move the Sherman House (Engel Hotel) to its present site in 1889. Their children are: Earl, Charlotte, Floyd, Royal, Marcella, Evelyn, and Norman. The Hirts are living in Bemidji, Minnesota.



Halvor A. Sharpe



Mr. and Mrs. William Sparrow



DIAMOND JUBILEE BOOSTERS

PORTLAND

Haugom Hardware
Our Own Hardware

Carlson's Foods
Arthur & G. Alfred Carlson

Volunteer Fire Department

Floyd's
Floyd Koehmstedt, Prop.

Ihnken Electric
Harry Ihnken

Farmers Union Co-op Creamery
Adolph Wegenast, Mgr.

**Farmers Mutual Insurance Co.
of Traill County**
E. H. Krogh, Sec'y.

Farmers Elevator
H. E. Lenaburg, Mgr.

Cooper Plumbing
Jay & Don Cooper

Olaf Flaten
Contractor

Peavey Elevator Co.
Dan Mjogdalen, Mgr.

Farmers Union Oil Co.
H. K. Foss & Vernon Eiken, Mgrs.

Portland Iron and Metal Co.
Tom Tollefson

Roxy Theater
Alfred Domier

Schmidt Oil and Implement
Louis Schmidt

Book and Thimble Club

John N. Nelson Insurance Agency

Keith G. Vandergon M. D.

Portland Republican,
Ejnar Eriksen

Gunderson Furnace Co.
Orville Gunderson

Portland Credit Union

Portland Drug Store

Portland Civic Association

First and Farmers Bank

Barber Shop,
Oscar Carlson

Goose River Construction Co.,
Thomas and Ingolf Amb

Dwyer Beverage Co.
Art Larson, Mgr.

Thompson Yards Inc.,
Rudy Enge, Mgr.

Polka Dot Drive-in,
Florence Ludwig

Shine's Cafe,
Mr. and Mrs. Earl Pixley

Northern States Power Co.

Pioneer Telephone Co.

**First and Farmers Bank Insurance
Agency**

DIAMOND JUBILEE BOOSTERS

(Continued)

Skarperud Funeral Home

Portland Junction Grain Co.

Carl Sorum, Mgr.

MAYVILLE

Haugen Ford Inc.

Ford & Mercury Cars

Solar Gas of N. Dak.

Jundt's Furniture

Hanson Transfer Inc.

Moen Implement Inc.

Case Machinery

Beck Service

Champlin Gas

Tastad Motors

Plymouth & Dodge Cars

Dornacker Seed Co.

Mayville Milling Co.

Dairy Queen

Al Meyers

Bowl Inn

Archie Fauglid

Larson Sales Co.

Allis Chalmers - Massey Harris

Haugen Dehydrating Co.,

Oliver and Alf Haugen

Groth Implement

John Doere Machinery

Mayville Motor

Chevrolet

Harrington Bros.

Livestock Market

Jemtrud Construction Co.

Ansgar Jemtrud

Egge Funeral Home

Karsten P. Egge

Grinager Mercantile Company

Mrs. Jens K. Grinager & family

FARGO

Cook Sign Co.

Fargo Foundry

Holsum Bread,

Odell Carlson, Salesman

Bristol Distributing Co.

Motorola TV

Gaffaney's Office Supply

Northern Improvement Co.

Bridges - Municipal Work

N. Dak. Metal and Culvert Co.

Sweeney Bros. Tractor Co.

Municipal & Construction Mehry.

American Linen Supply Co.

Shirley-Onstad, Inc.

Wholesale Plumbing & Heating

Andy Gompf

Floats & Decorations

DIAMOND JUBILEE BOOSTERS

(Continued)

MISCELLANEOUS

Bridgeman Creameries

Grand Forks, N. Dak.

Mohagen & Hunter Furniture

Hatton

Hallet & Carey

Grain Commission - Minneapolis

Coca Cola Bottling Co.

Grand Forks

Land O'Lakes Creameries

Thief River Falls

Sig Alsaker, Hillsboro

International - Chrysler - Plymouth

Fairmont Foods,

Moorhead

Benson-Quinn Co.,

Minneapolis - Grain Commission

Thompson's Gas Service,

Hillsboro - Pyrofax & Culligan

Hogenson Construction Co.,

Minneapolis

Transport Inc.,

Moorhead

Haakenson Drug,

Hatton

Farmers Union Central Exchange

St. Paul

Horvick Electric Motor Co.,

Moorhead

Ness Lumber Co.

Arne Larson - Hatton

Eddy's Bakery

Grand Forks

Fargo Packing & Sausage Co.,

Valley Maid Products - West Fargo

Dakota Kist Bottling Co.

Hatton

Nodak Electric Cooperative, Inc.

Grand Forks

L. W. Burdick, Engineering

Grand Forks

FEB 28 1960

STATE LIBRARY COMMISSION
BISMARCK, N. DAK.

HR 6'62
AP 24 63

SE 3 ~~34~~
IE-970

F
644
.P9
D53
1957